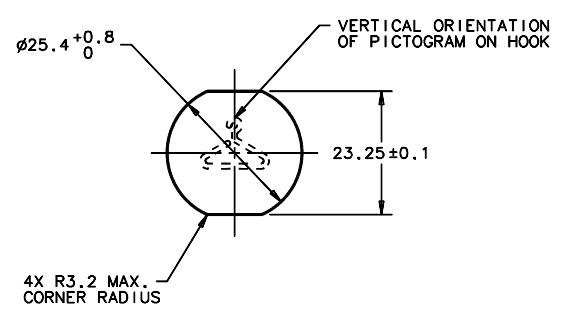


REV	DATE	DRAWN/CHKD	DESCRIPTION	COMPONENT	MATERIAL	FINISH
A	19MAY2009	ACH/AJS	MP EXTENDABLE COAT HOOK	COAT HOOK ASSEMBLY	DIE CAST ZINC	SEE TABLE
B	01NOV2010	AJT		HOOK	ACETAL	BLACK
				RACKET SPRING	STAINLESS STEEL	PASSIVATED
				SHAFT	STAINLESS STEEL	PASSIVATED
				FLANGE	DIE CAST ZINC	SEE TABLE
				HOOK SPRING	STAINLESS STEEL	PASSIVATED
				HOUSING	GF NYLON	BLACK
				GASKET	NEOPRENE	BLACK
				LOCKWASHER	STAINLESS STEEL	PASSIVATED
				MOUNTING NUT	GF NYLON	BLACK

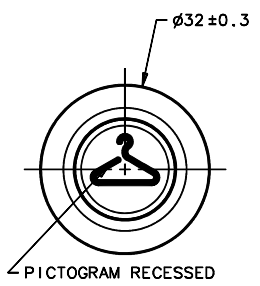
DATE	19MAY2009
DRAWN/CHKD	ACH/TL
SCALE	1:1
DRAWING NUMBER	J-MP-07-1
<b>MILLIMETERS</b>	
TOLERANCES UNLESS OTHERWISE NOTED	
UP TO 0.5 ±0.05	
OVER 0.5 UP TO 0.6 ±0.1	
OVER 0.6 UP TO 30 ±0.3	
OVER 30 ±1.1	
ANGLES ±1°	
A3 PAPER SIZE	
THIRD ANGLE PROJECTION	

**PANEL PREPARATION**

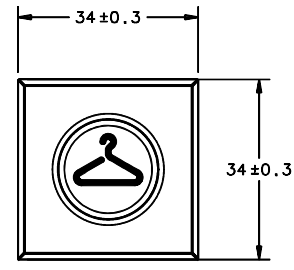


**HOOK STYLE (W):**

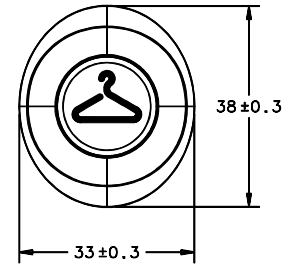
**ROUND**



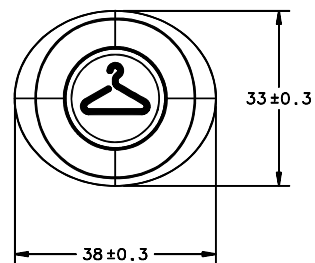
**SQUARE**



**OVAL TYPE 1**



**OVAL TYPE 2**



**ASSEMBLY PART NUMBER**

**MP-07-WX2-YZ**

HOOK STYLE TYPE --  
FLANGE FINISH --  
HOOK FINISH --

**HOOK STYLE (W)**

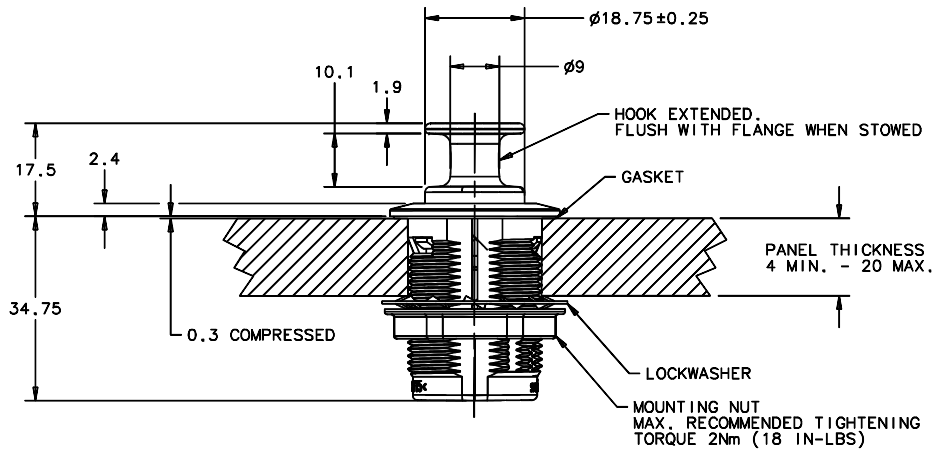
- 1 - OVAL
- 2 - SQUARE
- 3 - ROUND

**TYPE (X)**

- 1 - TYPE 1 OR UNIVERSAL (FOR SYMMETRICAL FLANGES)
- 2 - TYPE 2

**FINISH (FLANGE/HOOK) (Y OR Z)**

- 1 - POLISHED CHROME
- 2 - SATIN CHROME
- 4 - DIAMOND BRASS



**NOTES:**

**A. OPERATION:**

1. TO EXTEND, PUSH COAT HOOK BUTTON ONCE, TO STOW, FULLY PUSH COAT HOOK BUTTON AGAIN.

