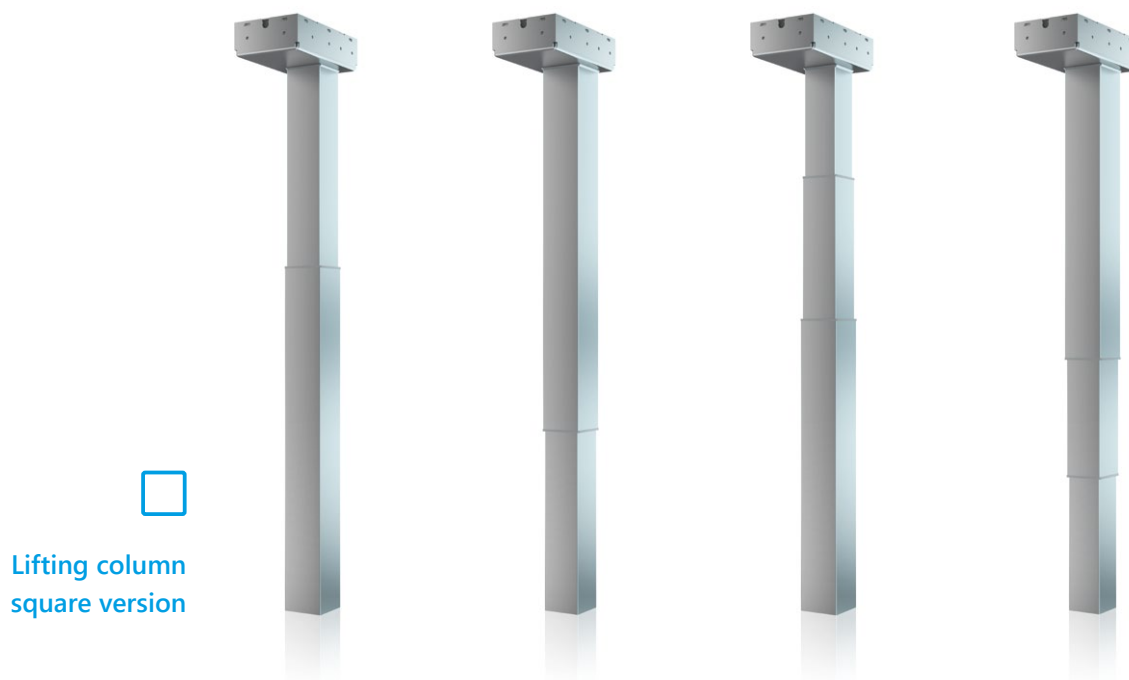


ELS3 Electric height adjustment for sit-to-stand workplaces



ELS3 Electric lifting columns at a glance

With the electrical lifting column ELS3 from SUSPA you can easily change your working position from sit to stand. The main features of the lifting columns are elegant design, quiet movement and a long adjustment range. All ELS systems have the option to have collision detection, which will stop the system automatically if an obstruction is detected.



Model name	ELS3-500S-BTD-Q	ELS3-500S-BTU-Q	ELS3-650-BTD-Q	ELS3-650-BTU-Q
Profile	square version			
Position of big tube	Big Tube Down (BTD)	Big Tube Up (BTU)	Big Tube Down (BTD)	Big Tube Up (BTU)
Material	steel profile			
Color	● silver-gray RAL 9006		○ white RAL 9003	● black RAL 9005
Design	1-stage telescopic	1-stage telescopic	2-stage telescopic	2-stage telescopic
Compressed length	650 mm	650 mm	570 mm	570 mm
Adjustment range (stroke)	500 mm	500 mm	650 mm	650 mm
Extended length	1,150 mm	1,150 mm	1,220 mm	1,220 mm
Maximum load <small>with controller SMART with controller COMPACT</small>	60 kg per leg -	60 kg per leg -	50 kg per leg 60 kg per leg	50 kg per leg 60 kg per leg
Adjustment speed	35 mm/s	35 mm/s	38 mm/s	38 mm/s
Dimensions of column <small>top middle bottom</small>	65 x 65 mm - 70 x 70 mm	70 x 70 mm - 65 x 65 mm	60 x 60 mm 65 x 65 mm 70 x 70 mm	70 x 70 mm 65 x 65 mm 60 x 60 mm
Dimensions of motor casing / top	202 x 120 x 56 mm			
Fixing for the footbase	4 x M8			



Further colors available on request



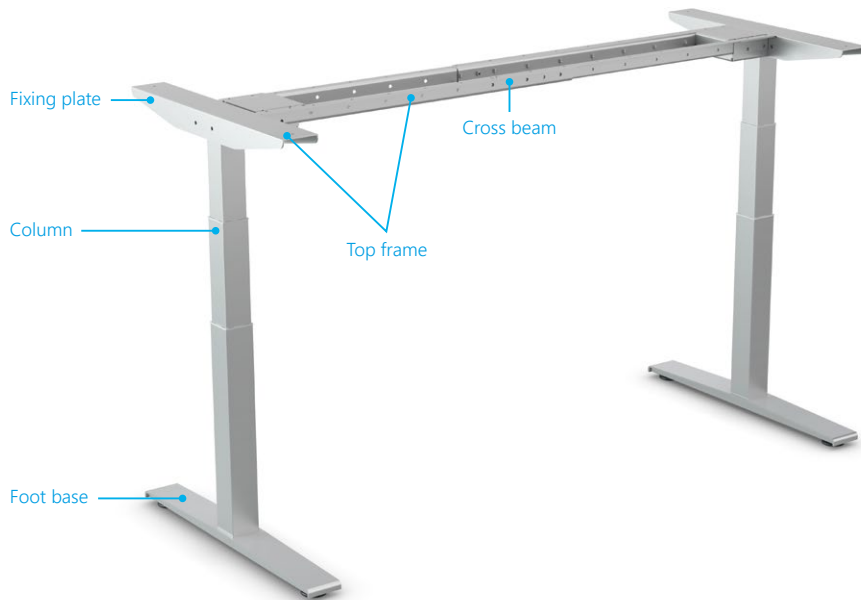
Lifting column
rectangle version

ELS3-500S-BTD-RE	ELS3-500S-BTU-RE	ELS3-650-BTD-RE	ELS3-650-BTU-RE
rectangle version			
Big Tube Down (BTD)	Big Tube Up (BTU)	Big Tube Down (BTD)	Big Tube Up (BTU)
steel profile			
● graphite RAL7024	further colors available on request		
1-stage telescopic	1-stage telescopic	2-stage telescopic	2-stage telescopic
650 mm	650 mm	570 mm	570 mm
500 mm	500 mm	650 mm	650 mm
1,150 mm	1,150 mm	1,220 mm	1,220 mm
60 kg per leg	60 kg per leg	50 kg per leg 60 kg per leg	50 kg per leg 60 kg per leg
35 mm/s	35 mm/s	38 mm/s	38 mm/s
101x61 mm - 107x67 mm	107x67 mm - 101x61 mm	95x55 mm 101x61 mm 107x67 mm	107x67 mm 101x61 mm 95x55 mm
202 x 120 x 56 mm			
4 x M8			

Electrically adjustable table base frames

The striking feature of the SUSPA table frame is its solid design. It is suitable for a wide range of applications and easy to assemble. The frames were specifically designed for our ELS3 range of adjustable legs and can be used with different legs, controller or switches.

The adjustable table base **VariFrame** comes with a split cross beam which is variable and can be adjusted to different table top sizes.



Model name	Table base frame VariFrame	
-------------------	----------------------------	--

Top frame

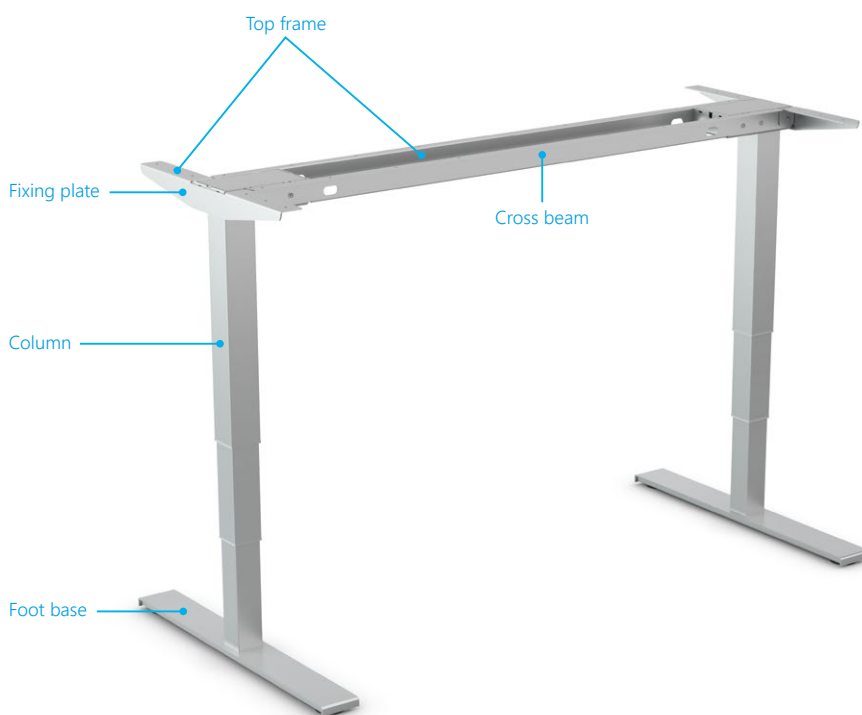
Color	● silver-gray RAL 9006 ○ white RAL 9003	
Cross beam	length	two-piece traverse, adjustable length of frame from 1,190 mm to 1,800 mm
Desk top dimensions	length	1,200 - 1,800 mm
	depth	700 - 800 mm
Material	steel profile	
Fixing plate	length	735 mm
Adjustment range (stroke) until top of frame	ELS3-500S: 700 - 1,200 mm	
	ELS3-650: 620 - 1,270 mm	
Maximum load table frame	100 kg	
Adjustment speed	ELS3-500S: 35 mm/s	
	ELS3-650: 38 mm/s	
Accessories	screws, adjustable feet	
For lifting columns	can be combined with all SUSPA columns	

Foot base

Type	FA1	
For lifting columns	ELS3-500S BTD square, ELS3-650 BTD square, ELS3-500S BTU square, ELS3-650 BTU square	
Dimensions	length	735 mm
	depth	85 mm
	height	44 mm



The table base **FixFrame** consists of a fixed cross beam, available in four different sizes. We offer control boxes and switches for the VariFrame as well as for the FixFrame (see pages 6 and 7).



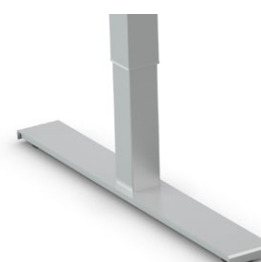
Model name Table base frame FixFrame

Top frame

Color	<input type="radio"/> silver-gray RAL 9006 <input type="radio"/> white RAL 9003 <input type="radio"/> black RAL 9005 <input type="radio"/> graphite RAL 7024
Cross beam length	fixed cross beam lengths: 1,340 mm, 1,540 mm, 1,740 mm, 1,940 mm
Desk top dimensions length depth	1,400 mm, 1,600 mm, 1,800 mm, 2,000 mm 700 - 800 mm
Material	steel profile
Fixing plate length	545 mm
Adjustment range (stroke) until top of frame	ELS3-500S: 680 - 1,180 mm ELS3-650: 600 - 1,250 mm
Maximum load table frame	100 kg
Adjustment speed	ELS3-500S: 35 mm/s ELS3-650: 38 mm/s
Accessories	screws, adjustable feet
For lifting columns	can be combined with all SUSPA columns

Foot base

Type	FA2
For lifting columns	can be combined with all SUSPA columns
Dimensions length depth height	750 mm 90 mm 30 mm



Accessories

The highly efficient control boxes have a flat and compact design. In combination with the switches they guarantee a reliable and economical operation of the tables.

COMPACT controller

- low standby power consumption: $\leq 0,3\text{ W}$
- Soft-Start and Soft-Stop
- 9, protection
- weight: 418 g / 523 g (3-leg-controller)
- dimensions: 264 x 103 x 37 mm
- input voltage: 230 V / 50 Hz
- output voltage: 288 VA (2-leg) 24 VDC / 360 VA (3-leg) 24 VDC
- operating time: 10 % at maximum load (1 min / 9 min)
- controls for EU- and US-voltage available
- external sensor collision detector possible with LOGIC-CONNECTOR



SMART controller

- low standby power consumption: $\leq 0,3\text{ W}$
- Soft-Start and Soft-Stop
- overload protection
- small size and flat design
- weight 305 g
- dimensions: 186 x 100 x 30 mm
- input voltage: 230 V / 50 Hz
- output voltage: 216 VA (2-leg) 24 VDC
- operating time: 10 % at maximum load (1 min / 9 min)
- controls for EU- and US-voltage available



Communication and Connectivity LOGIClink

LOGIClink provides connectivity and control, allowing for communication and customization of the user's work environment.



Power cable

- available for the control boxes COMPACT and SMART for different countries

Switches

We provide solutions for an installation below the table and within the table top. From a simple hand switch with Up/Down function to a comfort switch with four memory functions and display – all operational elements convince through their surface design and the pleasing haptics.



Hand switch Up-Down HSM-OD-2-LD



Hand switch Memory HSU-MDF-4M2-LD



Hand switch Up-Down TOUCHbasic DN



Hand switch Memory TOUCHfx



Hand switch Up-Down, Inlay TOUCHbasic IL



Hand switch Memory, Inlay TOUCHinlay

Ergonomics at the workplace

Over the last few years, SUSPA has become established as one of the leading suppliers of electric height adjustment systems. The topic of ergonomics at the workplace has increasingly gained importance in companies as well in recent years.

Since more and more people are experiencing back problems due to a lack of movement, it is not only the personal well being that is affected, but there is also enormous economic damage done through absences from work. The best way of countering the lack of movement in the office is to use sit-stand desks.



SUSPA GmbH Mechanical Applications

Industriestr. 12 -14
90518 Altdorf
Germany

Phone +49 9187 930355
Fax +49 9187 930311

infoindustry@de.suspa.com
www.suspa.com

www.suspa.com