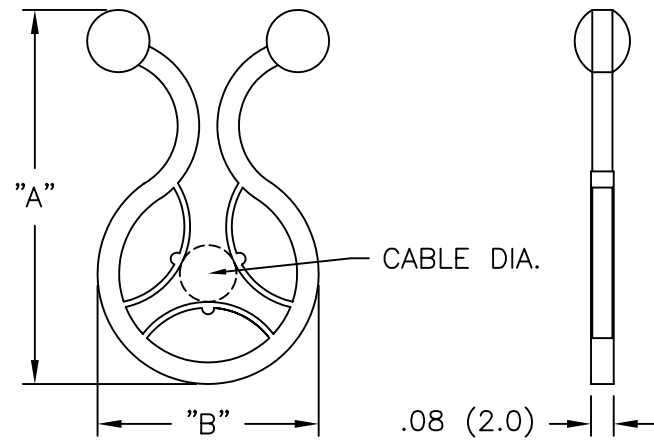


PART NO.	"A" REF.	"B" REF.	CABLE DIA.
WTL-600	1.30 (33.0)	.77 (19.5)	.20 (5.0)
WTL-750	1.54 (39.0)	.91 (23.2)	.22 (5.5)



NOTES:

- MATERIAL: NYLON 6/6 (RMS-01).
FLAME RETARDANT NYLON (RMS-19)
AVAILABLE BY SPECIAL REQUEST.
- COLOR: NATURAL.

B	CHANGED NOTE 1	SJ 03.13.02
A	CHANGED FILE NO. AND TITLE BLOCK	SM 01.24.02
REV	DESCRIPTION	ENGR DATE

TITLE: WEBBED TWIST LOK						DWG IN IN (MM)	
TOLERANCES UNLESS NOTED .XX=±.010 .XXX=±.005 FRAC=±1/64 ANG=±1°	FILE # WTL	DWN: P.B.	APP:	FINAL			
	MAT'L: SEE NOTES	DT: 08-05-94	DT:	PART #		PRINT TYPE	
	RE: RICHCO, INC.	RICHCO INC. PO BOX 804238, CHICAGO, 60680 (773) 539-4060		SEE TABLE		CA	