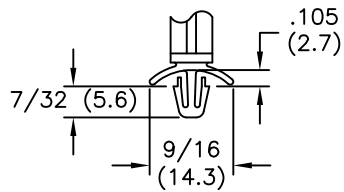
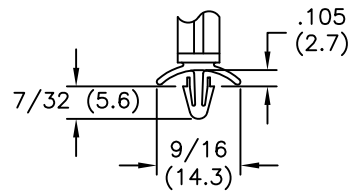


WSTL

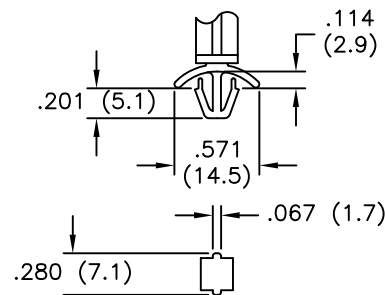
PART NO.				"A"	"B" REF.	CABLE DIA.
WSTL-600-8-01	WSTL1-600-8-01	WSTL2-600-8-01	WSTL3-600-8-01	1/2 (12.7)		
WSTL-600-12-01	WSTL1-600-12-01	WSTL2-600-12-01	WSTL3-600-12-01	3/4 (19.1)	1.18 (30.0)	.187 (4.75)
WSTL-600-16-01	WSTL1-600-16-01	WSTL2-600-16-01	WSTL3-600-16-01	1 (25.4)		
WSTL-600-20-01	WSTL1-600-20-01	WSTL2-600-20-01	WSTL3-600-20-01	1-1/4 (31.8)		
WSTL-750-3-01	WSTL1-750-3-01	WSTL2-750-3-01	WSTL3-750-3-01	3/16 (4.8)		
WSTL-750-8-01	WSTL1-750-8-01	WSTL2-750-8-01	WSTL3-750-8-01	1/2 (12.7)	1.36 (34.5)	.236 (6.0)
WSTL-750-12-01	WSTL1-750-12-01	WSTL2-750-12-01	WSTL3-750-12-01	3/4 (19.1)		



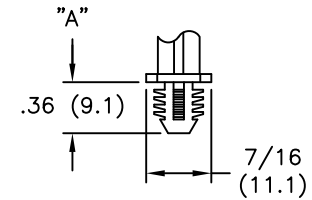
.187 ±.003 (4.75 ±0.08) DIA. HOLE
.031 TO .078 (0.8 TO 2.0)
PANEL THICKNESS



.156 ±.003 (4.0 ±0.08) DIA. HOLE
.031 TO .078 (0.8 TO 2.0)
PANEL THICKNESS



.217 (5.5) SQ. HOLE
.031 TO .078 (0.8 TO 2.0)
PANEL THICKNESS



TO PRESS-FIT IN A .312 (7.9)
DIA. HOLE IN A .25 (6.4)
MINIMUM PANEL THICKNESS

NOTES:

- MATERIAL: NYLON 6/6 (RMS-01).
FLAME RETARDANT NYLON (RMS-19) AVAILABLE BY SPECIAL ORDER.
- COLOR: NATURAL.

TITLE: WEBBED STAND-OFF TWIST LOK		DWG IN IN (MM)	FINAL	
TOLERANCES UNLESS NOTED .XX=±.010 .XXX=±.005 FRAC=±1/64 ANG=±1°	FILE # WSTL MAT'L: SEE NOTES RE: RICHCO, INC.	DWN: P.B. DT: 08-16-94	APP: DT:	PART # SEE TABLE
G SEE CO 200773 FOR CHANGES SK 04.30.12		RICHCO INC. PO BOX 804238, CHICAGO, 60680 (773) 539-4060		PRINT TYPE CA
F SEE CO 200035 FOR CHANGES SK 09.26.07				
- SEE ENGINEERING FOR REV A-E -				
REV	DESCRIPTION	ENGR	DATE	

G	SEE CO 200773 FOR CHANGES	SK 04.30.12
F	SEE CO 200035 FOR CHANGES	SK 09.26.07
-	SEE ENGINEERING FOR REV A-E	-
REV	DESCRIPTION	ENGR DATE