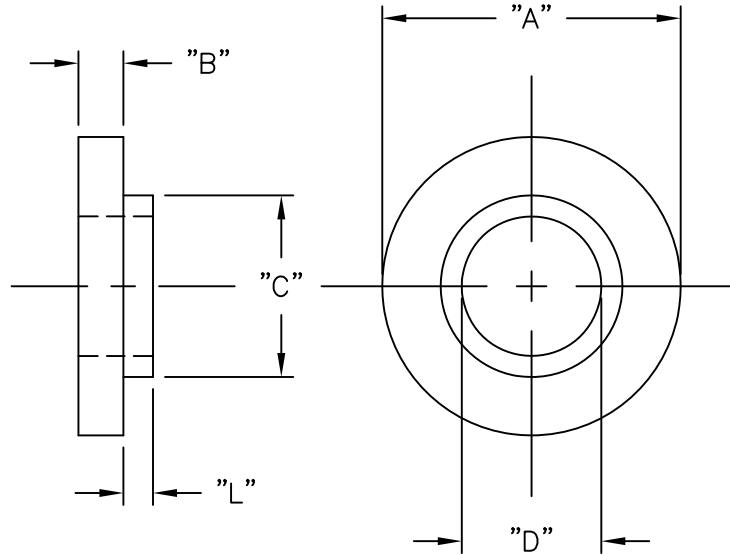


PART NO.	SCREW SIZE	APP. METRIC EQUIVALENT	"L" ±.010	"A" ±.010	"B" ±.010	"C" ±.005	"D" ±.005
MNI-HT-4-2	#4	M3	.031 (0.8)	.280 (7.1)	.047 (1.2)	.145 (3.7)	.118 (3.0)
MNI-HT-4-220 *			.032 (0.8)	.215 (5.5)	.040 (1.0)	.135 (3.4)	.116 (2.9)
MNI-HT-10-6	#10	M4.5	.093 (2.4)	.399 (10.1)	.063 (1.6)	.260 (6.6)	.200 (5.1)

* DESIGN ALLOWS INSERTION IN THE TAB OF A TO-220 TRANSISTOR



NOTES:

1. MATERIAL: 40% GLASS FILLED.
POLYPHENYLENE SULFIDE, (RMS-50) UL94 V-0.
2. COLOR: BLACK.

TITLE: MOLDED NYLON INSULATOR, HIGH TEMPERATURE			DWG IN IN (MM)		FINAL			
D	SEE CO 200773 FOR CHANGES	SK 04.30.12	TOLERANCES UNLESS NOTED	FILE # MNI-HT	DWN: J.B.	APP:	PART #	
C	SEE ECN #892 FOR CHANGES	SM 12.14.04	.XX=±.010	MAT'L: SEE NOTES	DT: 01-17-96	DT:	PRINT TYPE	
B	UPDATED TABLE AND ADDED "SULFIDE" TO NOTES	SM 02.25.02	.XXX=±.005	RE: RICHCO, INC.	RICHCO INC. PO BOX 804238, CHICAGO, 60680		SEE TABLE	
A	CHANGED FILE NO. AND TITLE BLOCK	SM 12.04.01	FRAC=±1/64	ANG=±1°		CA		
REV	DESCRIPTION	ENGR DATE						