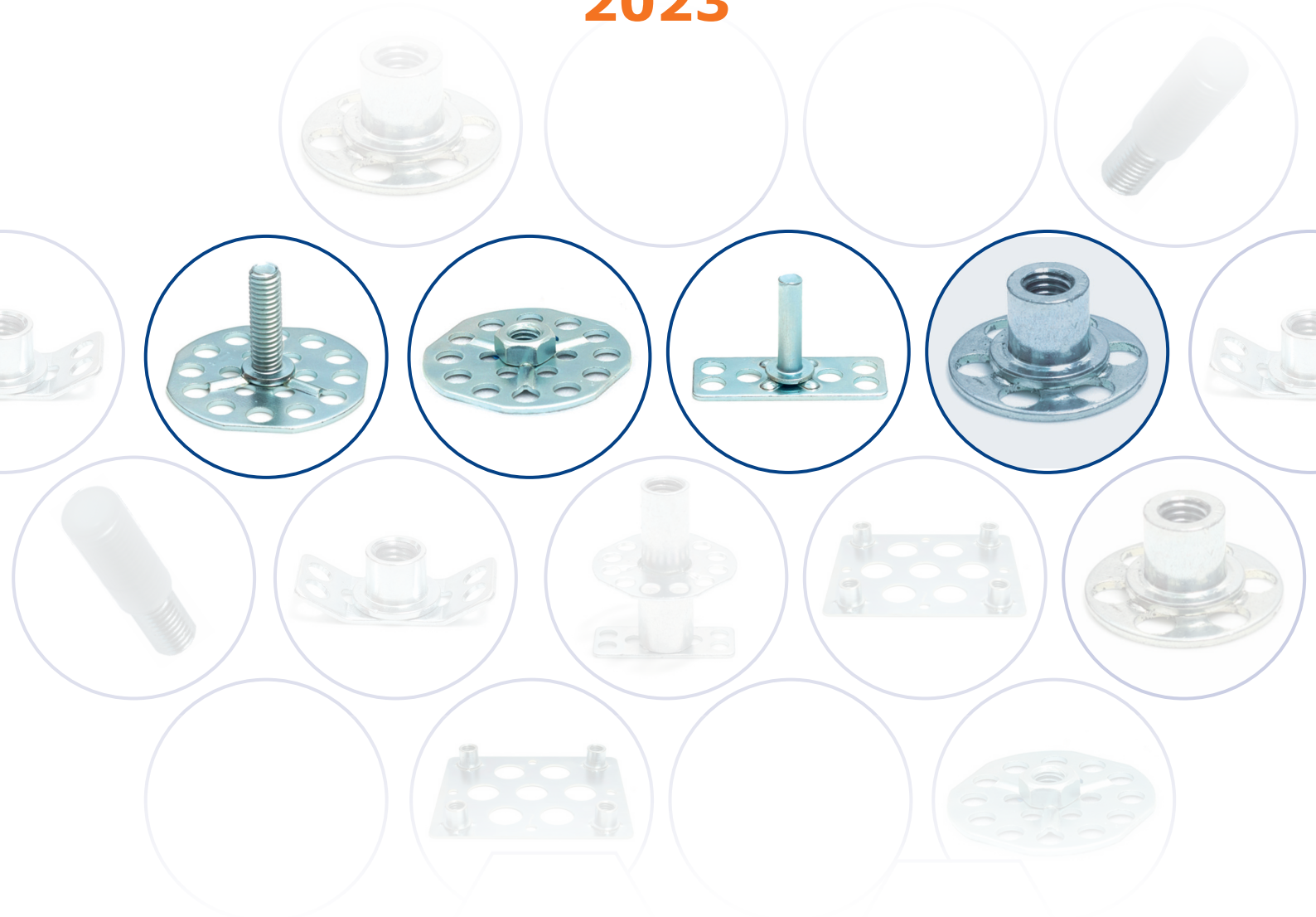




F A S T E N E R S

Bonding Fastener Parts Catalogue

2023



VECK COMPOSITE FASTENERS LTD

Tel. +44 (0)1305 257800

Email. info@veckfasteners.com - www.veckfasteners.com



				
Stud Welded to B1515 Page 3	Stud Welded to B19 Page 3	Stud Welded to B23 Page 4	Stud Welded to B3030 Page 4	Stud Welded to B3815 Page 5
				
Stud Welded to B38 Page 5	Stud Welded to B50 Page 6	Thread Protectors Page 6	Pin Welded to B1515 Page 7	Pin Welded to B19 Page 7
				
Pin Welded to B23 Page 7	Pin Welded to B3030 Page 7	Pin Welded to B3815 Page 8	Pin Welded to B38 Page 8	Spring Clips Page 8
				
Nut Welded to S19 Page 9 Nut Welded to B19 Page 10	Nut Welded to S23 Page 9 Nut Welded to B23 Page 10	Nut Welded to S3030 Page 9 Nut Welded to B3030 Page 10	Nut Welded to S3815 Page 9 Nut Welded to B3815 Page 10	Nut Welded to S38 Page 9 Nut Welded to B38 Page 10
				
Nut Welded to a S50 Page 9 B50 Page 10	Bush Welded to a S19 Page 11 B19 Page 13	Bush Welded to a S23 Page 11 B23 Page 13	Bush Welded to a S3030 Page 11 B3030 Page 13	Bush Welded to a S3815 Page 12 B3815 Page 14
				
Bush Welded to a S38 Page 12 B38 Page 14	Bush Welded to a S50 Page 12 B50 Page 14			

The above images are NOT to scale and are for illustration only.



Stud Welded to B1515
Page 15



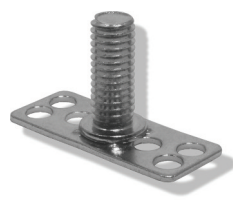
Stud Welded to B19
Page 15



Stud Welded to B23
Page 16



Stud Welded to B3030
Page 16



Stud Welded to B3815
Page 17



Stud Welded to B38
Page 17



Stud Welded to B50
Page 18



Thread Protectors
Page 18



Pin Welded to B1515
Page 19



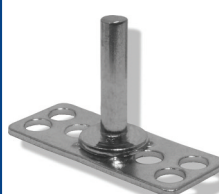
Pin Welded to B19
Page 19



Pin Welded to B23
Page 19



Pin Welded to B3030
Page 19



Pin Welded to B3815
Page 20



Pin Welded to B38
Page 20



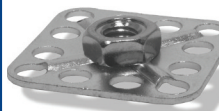
Spring Clips
Page 20



Nut Welded to S19 Page 21
Nut Welded to B19 Page 22



Nut Welded to S23 Page 21
Nut Welded to B23 Page 22



Nut Welded to S3030 Page 21
Nut Welded to B3030 Page 22



Nut Welded to S3815 Page 21
Nut Welded to B3815 Page 22



Nut Welded to S38 Page 21
Nut Welded to B38 Page 22



Nut Welded to a
S50 Page 21 B50 Page 22



Bush Welded to a
S19 Page 23 B19 Page 25



Bush Welded to a
S23 Page 23 B23 Page 25



Bush Welded to a
S3030 Page 23 B3030 Page 25



Bush Welded to a
S3815 Page 24 B3815 Page 26



Bush Welded to a
S38 Page 24 B38 Page 26



Bush Welded to a
S50 Page 24 B50 Page 26

The above images are NOT to scale and
are for illustration only.



Zinc plated Mild Steel male threaded stud on a 15x15mm square base plate

part number	fastener size
MSM1B1515M412	M4x12
MSM1B1515M416	M4x16
MSM1B1515M420	M4x20
MSM1B1515M425	M4x25
MSM1B1515M430	M4x30
MSM1B1515M440	M4x40
MSM1B1515M450	M4x50
MSM1B1515M512	M5x12
MSM1B1515M516	M5x16

part number	fastener size
MSM1B1515M520	M5x20
MSM1B1515M525	M5x25
MSM1B1515M530	M5x30
MSM1B1515M540	M5x40
MSM1B1515M550	M5x50
MSM1B1515M560	M5x60
MSM1B1515M575	M5x75
MSM1B1515M612	M6x12
MSM1B1515M616	M6x16

EXAMPLE OF PART NUMBER

MS - mild steel

M1 - male threaded stud

B - blind perforated base plate

1515 - 15x15mm base plate

M4 - metric thread diameter

12 - length of thread in mm

part number	fastener size
MSM1B1515M620	M6x20
MSM1B1515M625	M6x25
MSM1B1515M630	M6x30
MSM1B1515M640	M6x40
MSM1B1515M650	M6x50
MSM1B1515M660	M6x60
MSM1B1515M675	M6x75



Zinc plated Mild Steel male threaded stud on a 19mm diameter base plate

part number	fastener size
MSM1B19M412	M4x12
MSM1B19M416	M4x16
MSM1B19M420	M4x20
MSM1B19M425	M4x25
MSM1B19M430	M4x30
MSM1B19M440	M4x40
MSM1B19M450	M4x50
MSM1B19M460	M4x60
MSM1B19M475	M4x75
MSM1B19M512	M5x12
MSM1B19M516	M5x16
MSM1B19M520	M5x20
MSM1B19M525	M5x25
MSM1B19M530	M5x30
MSM1B19M540	M5x40
MSM1B19M550	M5x50

part number	fastener size
MSM1B19M560	M5x60
MSM1B19M575	M5x75
MSM1B19M612	M6x12
MSM1B19M616	M6x16
MSM1B19M620	M6x20
MSM1B19M625	M6x25
MSM1B19M630	M6x30
MSM1B19M640	M6x40
MSM1B19M650	M6x50
MSM1B19M660	M6x60
MSM1B19M675	M6x75
MSM1B19M812	M8x12
MSM1B19M816	M8x16
MSM1B19M820	M8x20
MSM1B19M825	M8x25
MSM1B19M830	M8x30

EXAMPLE OF PART NUMBER

MS - mild steel

M1 - male threaded stud

B - blind perforated base plate

19 - 19mm base plate

M4 - metric thread diameter

12 - length of thread in mm

part number	fastener size
MSM1B19M840	M8x40
MSM1B19M850	M8x50
MSM1B19M860	M8x60
MSM1B19M875	M8x75
MSM1B19M1012	M10x12
MSM1B19M1016	M10x16
MSM1B19M1020	M10x20
MSM1B19M1025	M10x25
MSM1B19M1030	M10x30
MSM1B19M1040	M10x40
MSM1B19M1050	M10x50
MSM1B19M1060	M10x60
MSM1B19M1075	M10x75



Zinc plated Mild Steel male threaded stud on a 23mm diameter base plate

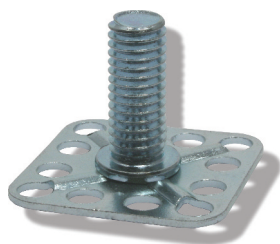
EXAMPLE OF PART NUMBER

MS - mild steel
M1 - male threaded stud
B - blind perforated base plate
23 - 23mm base plate
M4 - metric thread diameter
12 - length of thread in mm

part number	fastener size
MSM1B23M412	M4x12
MSM1B23M416	M4x16
MSM1B23M420	M4x20
MSM1B23M425	M4x25
MSM1B23M430	M4x30
MSM1B23M440	M4x40
MSM1B23M450	M4x50
MSM1B23M460	M4x60
MSM1B23M475	M4x75
MSM1B23M512	M5x12
MSM1B23M516	M5x16
MSM1B23M520	M5x20
MSM1B23M525	M5x25
MSM1B23M530	M5x30
MSM1B23M540	M5x40

part number	fastener size
MSM1B23M550	M5x50
MSM1B23M560	M5x60
MSM1B23M575	M5x75
MSM1B23M612	M6x12
MSM1B23M616	M6x16
MSM1B23M620	M6x20
MSM1B23M625	M6x25
MSM1B23M630	M6x30
MSM1B23M640	M6x40
MSM1B23M650	M6x50
MSM1B23M660	M6x60
MSM1B23M675	M6x75
MSM1B23M812	M8x12
MSM1B23M816	M8x16
MSM1B23M820	M8x20

part number	fastener size
MSM1B23M825	M8x25
MSM1B23M830	M8x30
MSM1B23M840	M8x40
MSM1B23M850	M8x50
MSM1B23M860	M8x60
MSM1B23M875	M8x75
MSM1B23M1012	M10x12
MSM1B23M1016	M10x16
MSM1B23M1020	M10x20
MSM1B23M1025	M10x25
MSM1B23M1030	M10x30
MSM1B23M1040	M10x40
MSM1B23M1050	M10x50
MSM1B23M1060	M10x60
MSM1B23M1075	M10x75



Zinc plated Mild Steel male threaded stud on a 30x30mm square base plate

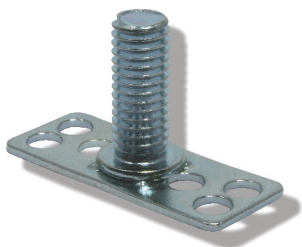
EXAMPLE OF PART NUMBER

MS - mild steel
M1 - male threaded stud
B - blind perforated base plate
3030 - 30x30mm base plate
M4 - metric thread diameter
12 - length of thread in mm

part number	fastener size
MSM1B3030M412	M4x12
MSM1B3030M416	M4x16
MSM1B3030M420	M4x20
MSM1B3030M425	M4x25
MSM1B3030M430	M4x30
MSM1B3030M440	M4x40
MSM1B3030M450	M4x50
MSM1B3030M460	M4x60
MSM1B3030M475	M4x75
MSM1B3030M512	M5x12
MSM1B3030M516	M5x16
MSM1B3030M520	M5x20
MSM1B3030M525	M5x25
MSM1B3030M530	M5x30
MSM1B3030M540	M5x40

part number	fastener size
MSM1B3030M550	M5x50
MSM1B3030M560	M5x60
MSM1B3030M575	M5x75
MSM1B3030M612	M6x12
MSM1B3030M616	M6x16
MSM1B3030M620	M6x20
MSM1B3030M625	M6x25
MSM1B3030M630	M6x30
MSM1B3030M640	M6x40
MSM1B3030M650	M6x50
MSM1B3030M660	M6x60
MSM1B3030M675	M6x75
MSM1B3030M812	M8x12
MSM1B3030M816	M8x16
MSM1B3030M820	M8x20

part number	fastener size
MSM1B3030M825	M8x25
MSM1B3030M830	M8x30
MSM1B3030M840	M8x40
MSM1B3030M850	M8x50
MSM1B3030M860	M8x60
MSM1B3030M875	M8x75
MSM1B3030M1012	M10x12
MSM1B3030M1016	M10x16
MSM1B3030M1020	M10x20
MSM1B3030M1025	M10x25
MSM1B3030M1030	M10x30
MSM1B3030M1040	M10x40
MSM1B3030M1050	M10x50
MSM1B3030M1060	M10x60
MSM1B3030M1075	M10x75



**Zinc plated Mild Steel
male threaded stud on a
38x15mm rectangular
base plate**

EXAMPLE OF PART NUMBER

MS - mild steel

M1 - male threaded stud

B - blind perforated base plate

3815 - 38x15mm base plate

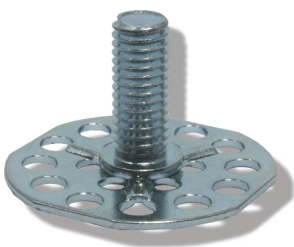
M4 - metric thread diameter

12 - length of thread in mm

part number	fastener size
MSM1B3815M412	M4x12
MSM1B3815M416	M4x16
MSM1B3815M420	M4x20
MSM1B3815M425	M4x25
MSM1B3815M430	M4x30
MSM1B3815M440	M4x40
MSM1B3815M450	M4x50
MSM1B3815M460	M4x60
MSM1B3815M475	M4x75
MSM1B3815M512	M5x12
MSM1B3815M516	M5x16
MSM1B3815M520	M5x20
MSM1B3815M525	M5x25
MSM1B3815M530	M5x30
MSM1B3815M540	M5x40

part number	fastener size
MSM1B3815M550	M5x50
MSM1B3815M560	M5x60
MSM1B3815M575	M5x75
MSM1B3815M612	M6x12
MSM1B3815M616	M6x16
MSM1B3815M620	M6x20
MSM1B3815M625	M6x25
MSM1B3815M630	M6x30
MSM1B3815M640	M6x40
MSM1B3815M650	M6x50
MSM1B3815M660	M6x60
MSM1B3815M675	M6x75
MSM1B3815M812	M8x12
MSM1B3815M816	M8x16
MSM1B3815M820	M8x20

part number	fastener size
MSM1B3815M825	M8x25
MSM1B3815M830	M8x30
MSM1B3815M840	M8x40
MSM1B3815M850	M8x50
MSM1B3815M860	M8x60
MSM1B3815M875	M8x75
MSM1B3815M1012	M10x12
MSM1B3815M1016	M10x16
MSM1B3815M1020	M10x20
MSM1B3815M1025	M10x25
MSM1B3815M1030	M10x30
MSM1B3815M1040	M10x40
MSM1B3815M1050	M10x50
MSM1B3815M1060	M10x60
MSM1B3815M1075	M10x75



**Zinc plated Mild Steel male
threaded stud on a 38mm
diameter base plate**

EXAMPLE OF PART NUMBER

MS - mild steel

M1 - male threaded stud

B - blind perforated base plate

38 - 38mm base plate

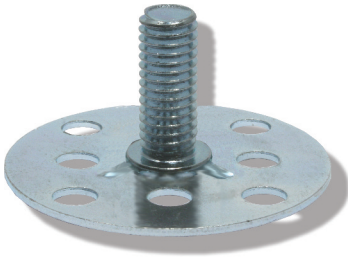
M4 - metric thread diameter

12 - length of thread in mm

part number	fastener size
MSM1B38M412	M4x12
MSM1B38M416	M4x16
MSM1B38M420	M4x20
MSM1B38M425	M4x25
MSM1B38M430	M4x30
MSM1B38M440	M4x40
MSM1B38M450	M4x50
MSM1B38M460	M4x60
MSM1B38M475	M4x75
MSM1B38M512	M5x12
MSM1B38M516	M5x16
MSM1B38M520	M5x20
MSM1B38M525	M5x25
MSM1B38M530	M5x30
MSM1B38M540	M5x40

part number	fastener size
MSM1B38M550	M5x50
MSM1B38M560	M5x60
MSM1B38M575	M5x75
MSM1B38M612	M6x12
MSM1B38M616	M6x16
MSM1B38M620	M6x20
MSM1B38M625	M6x25
MSM1B38M630	M6x30
MSM1B38M640	M6x40
MSM1B38M650	M6x50
MSM1B38M660	M6x60
MSM1B38M675	M6x75
MSM1B38M812	M8x12
MSM1B38M816	M8x16
MSM1B38M820	M8x20

part number	fastener size
MSM1B38M825	M8x25
MSM1B38M830	M8x30
MSM1B38M840	M8x40
MSM1B38M850	M8x50
MSM1B38M860	M8x60
MSM1B38M875	M8x75
MSM1B38M1012	M10x12
MSM1B38M1016	M10x16
MSM1B38M1020	M10x20
MSM1B38M1025	M10x25
MSM1B38M1030	M10x30
MSM1B38M1040	M10x40
MSM1B38M1050	M10x50
MSM1B38M1060	M10x60
MSM1B38M1075	M10x75



Zinc plated Mild Steel male threaded stud on a 50mm diameter base plate

EXAMPLE OF PART NUMBER

MS - mild steel
M1 - male threaded stud
B - blind perforated base plate
50 - 50mm base plate
M4 - metric thread diameter
12 - length of thread in mm

part number	fastener size
MSM1B50M615	M6x15
MSM1B30M620	M6x20
MSM1B50M625	M6x25
MSM1B50M630	M6x30
MSM1B50M640	M6x40
MSM1B50M650	M6x50
MSM1B50M660	M6x60
MSM1B50M675	M6x75

part number	fastener size
MSM1B50M815	M8x15
MSM1B50M820	M8x20
MSM1B50M825	M8x25
MSM1B50M830	M8x30
MSM1B50M840	M8x40
MSM1B50M850	M8x50
MSM1B50M860	M8x60
MSM1B50M875	M8x75

part number	fastener size
MSM1B50M1015	M10x15
MSM1B50M1020	M10x20
MSM1B50M1025	M10x25
MSM1B50M1030	M10x30
MSM1B50M1040	M10x40
MSM1B50M1050	M10x50
MSM1B50M1060	M10x60
MSM1B50M1075	M10x75



MTP

part number	fastener size
MTPM4X14	M4x14
MTPM5X25	M5x25
MTPM6x25	M6x25
MTPM6x50	M6x50
MTPM8X50	M8x50

"MTP Male thread protectors (closed end, easy fit)"



MTPT

part number	fastener size
MTPTM5x25	M5x25
MTPTM6x12	M6x12
MTPTM6x25	M6x25
MTPTM8X30	M8x30

"MTPO Male thread protectors (open end, easy fit)"



MTPO

part number	fastener size
MTPOM4x25	M4x25
MTPOM5x25	M5x25
MTPOM6X25	M6x25
MTPOM6X50	M6x50
MTPOM8x19	M8x19
MTPOM8X22	M8x22
MTPOM8x75	M8x75
MTPOM10x30	M10x30
MTPOM10x50	M10x50
MTPOM10x75	M10x75

"Male thread protectors (open end, easy fit)"

EXAMPLE OF PART NUMBER

MTP - male thread protector (tight fit) with closed end
M5 - for use with a male thread of this diameter
25 - for use with a male thread of this length

EXAMPLE OF PART NUMBER

MTP - male thread protector (easy fit) with closed end
M6 - for use with a male thread of this diameter
12 - for use with a male thread of this length

EXAMPLE OF PART NUMBER

MTP - male thread protector (easy fit) with open end
M4 - for use with a male thread of this diameter
25 - for use with a male thread of this length



**Zinc plated Mild Steel male
plain pin on a 15x15mm
square base plate**

part number	fastener size
MSM4B151547512	4.75x12
MSM4B151547516	4.75x16
MSM4B151547520	4.75x20
MSM4B151547525	4.75x25
MSM4B151547530	4.75x30

part number	fastener size
MSM4B151547540	4.75x40
MSM4B151547550	4.75x50
MSM4B151547560	4.75x60
MSM4B151547575	4.75x75



**Zinc plated Mild Steel
male plain pin on a 19mm
diameter base plate**

part number	fastener size
MSM4B1947512	4.75x12
MSM4B1947516	4.75x16
MSM4B1947520	4.75x20
MSM4B1947525	4.75x25
MSM4B1947530	4.75x30

part number	fastener size
MSM4B1947540	4.75x40
MSM4B1947550	4.75x50
MSM4B1947560	4.75x60
MSM4B1947575	4.75x75



**Zinc plated Mild Steel male
plain pin on a 23mm
diameter base plate**

part number	fastener size
MSM4B2347512	4.75x12
MSM4B2347516	4.75x16
MSM4B2347520	4.75x20
MSM4B2347525	4.75x25
MSM4B2347530	4.75x30

part number	fastener size
MSM4B2347540	4.75x40
MSM4B2347550	4.75x50
MSM4B2347560	4.75x60
MSM4B2347575	4.75x75



**Zinc plated Mild Steel male
plain pin on a 30x30mm
square base plate**

part number	fastener size
MSM4B303047512	4.75x12
MSM4B303047516	4.75x16
MSM4B303047520	4.75x20
MSM4B303047525	4.75x25
MSM4B303047530	4.75x30

part number	fastener size
MSM4B303047540	4.75x40
MSM4B303047550	4.75x50
MSM4B303047560	4.75x60
MSM4B303047575	4.75x75

EXAMPLE OF PART NUMBER

MS - mild steel
M4 - male plain pin
B - blind perforated base plate
1515 - 15x15mm base plate
475 - 4.75mm pin diameter
12 - pin length in mm

EXAMPLE OF PART NUMBER

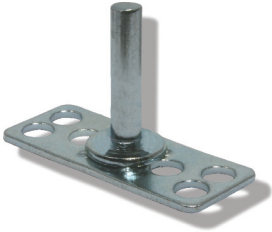
MS - mild steel
M4 - male plain pin
B - blind perforated base plate
19 - 19mm base plate
475 - 4.75mm pin diameter
12 - pin length in mm

EXAMPLE OF PART NUMBER

MS - mild steel
M4 - male plain pin
B - blind perforated base plate
23 - 23mm base plate
475 - 4.75mm pin diameter
12 - pin length in mm

EXAMPLE OF PART NUMBER

MS - mild steel
M4 - male plain pin
B - blind perforated base plate
3030 - 30x30mm base plate
475 - 4.75mm pin diameter
12 - pin length in mm



Zinc plated Mild Steel male plain pin on a 38x15mm rectangular base plate

part number	fastener size
MSM4B381547512	4.75x12
MSM4B381547516	4.75x16
MSM4B381547520	4.75x20
MSM4B381547525	4.75x25
MSM4B381547530	4.75x30

part number	fastener size
MSM4B381547540	4.75x40
MSM4B381547550	4.75x50
MSM4B381547560	4.75x60
MSM4B381547575	4.75x75

EXAMPLE OF PART NUMBER

MS - mild steel
M4 - male plain pin
B - blind perforated base plate
3815 - 38x15mm base plate
475 - 4.75mm pin diameter
12 - pin length in mm



Zinc plated Mild Steel male plain pin on a 38mm diameter base plate

part number	fastener size
MSM4B3847512	4.75x12
MSM4B3847516	4.75x16
MSM4B3847520	4.75x20
MSM4B3847525	4.75x25
MSM4B3847530	4.75x30

part number	fastener size
MSM4B3847540	4.75x40
MSM4B3847550	4.75x50
MSM4B3847560	4.75x60
MSM4B3847575	4.75x75

EXAMPLE OF PART NUMBER

MS - mild steel
M4 - male plain pin
B - blind perforated base plate
38 - 38mm base plate
475 - 4.75mm pin diameter
12 - pin length in mm

Spring Clip



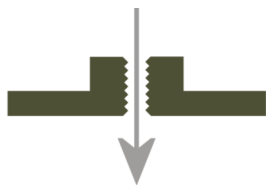
part number	description
S3	spring clip

Encapsulated Spring Clip



part number	description
S3E	plastic encapsulated S3

Spring Clips (to suit a 4.75mm diameter pin)



**Zinc plated Mild Steel
hexagonal nut on a sighted
19mm diameter base plate**



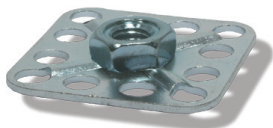
part number	fastener size
MSF1S19M3	M3 Hex Nut
MSF1S19M4	M4 Hex Nut
MSF1S19M5	M5 Hex Nut

**Zinc plated Mild Steel
hexagonal nut on a sighted
23mm diameter base plate**



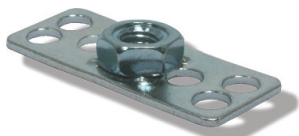
part number	fastener size
MSF1S23M3	M3 Hex Nut
MSF1S23M4	M4 Hex Nut
MSF1S23M5	M5 Hex Nut

**Zinc plated Mild Steel
hexagonal nut on a sighted
30x30mm square base plate**



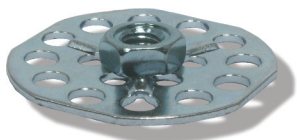
part number	fastener size
MSF1S3030M4	M4 Hex Nut
MSF1S3030M5	M5 Hex Nut
MSF1S3030M6	M6 Hex Nut

**Zinc plated Mild Steel
hexagonal nut on a sighted
38x15mm rectangular
base plate**



part number	fastener size
MSF1S3815M3	M3 Hex Nut
MSF1S3815M4	M4 Hex Nut
MSF1S3815M5	M5 Hex Nut

**Zinc plated Mild Steel
hexagonal nut on a sighted
38mm diameter base plate**



part number	fastener size
MSF1S38M4	M4 Hex Nut
MSF1S38M5	M5 Hex Nut
MSF1S38M6	M6 Hex Nut

**Zinc plated Mild Steel
hexagonal nut on a sighted
50mm diameter base plate**



part number	fastener size
MSF1S50M5	M5 Hex Nut
MSF1S50M6	M6 Hex Nut
MSF1S50M8	M8 Hex Nut

EXAMPLE OF PART NUMBER

MS - mild steel

F1 - hexagonal nut

S - sighted perforated base plate
(with central thru-hole)

19 - 19mm base plate

M3 - 3mm internal thread diameter

part number	fastener size
MSF1S19M6	M6 Hex Nut
MSF1S19M8	M8 Hex Nut

part number	fastener size
MSF1S23M6	M6 Hex Nut
MSF1S23M8	M8 Hex Nut
MSF1S23M10	M10 Hex Nut

part number	fastener size
MSF1S3030M8	M8 Hex Nut
MSF1S3030M10	M10 Hex Nut
MSF1S3030M12	M12 Hex Nut

part number	fastener size
MSF1S3815M6	M6 Hex Nut
MSF1S3815M8	M8 Hex Nut
MSF1S3815M10	M10 Hex Nut

part number	fastener size
MSF1S38M8	M8 Hex Nut
MSF1S38M10	M10 Hex Nut
MSF1S38M12	M12 Hex Nut

part number	fastener size
MSF1S50M10	M10 Hex Nut
MSF1S50M12	M12 Hex Nut



**Zinc plated Mild Steel
hexagonal nut on a blind
19mm diameter base plate**



part number	fastener size
MSF1B19M3	M3 Hex Nut
MSF1B19M4	M4 Hex Nut
MSF1B19M5	M5 Hex Nut

EXAMPLE OF PART NUMBER

MS - mild steel

F1 - hexagonal nut

B - blind perforated base plate
(no central thru-hole)

19 - 19mm base plate

M3 - 3mm internal thread diameter

part number	fastener size
MSF1B19M6	M6 Hex Nut
MSF1B19M8	M8 Hex Nut

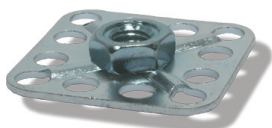
**Zinc plated Mild Steel
hexagonal nut on a blind
23mm diameter base plate**



part number	fastener size
MSF1B23M3	M3 Hex Nut
MSF1B23M4	M4 Hex Nut
MSF1B23M5	M5 Hex Nut

part number	fastener size
MSF1B23M6	M6 Hex Nut
MSF1B23M8	M8 Hex Nut
MSF1B23M10	M10 Hex Nut

**Zinc plated Mild Steel
hexagonal nut on a blind
30x30mm square base plate**



part number	fastener size
MSF1B3030M4	M4 Hex Nut
MSF1B3030M5	M5 Hex Nut
MSF1B3030M6	M6 Hex Nut

part number	fastener size
MSF1B3030M8	M8 Hex Nut
MSF1B3030M10	M10 Hex Nut
MSF1B3030M12	M12 Hex Nut

**Zinc plated Mild Steel
hexagonal nut on a blind
38x15mm rectangular
base plate**



part number	fastener size
MSF1B3815M3	M3 Hex Nut
MSF1B3815M4	M4 Hex Nut
MSF1B3815M5	M5 Hex Nut

part number	fastener size
MSF1B3815M6	M6 Hex Nut
MSF1B3815M8	M8 Hex Nut
MSF1B3815M10	M10 Hex Nut

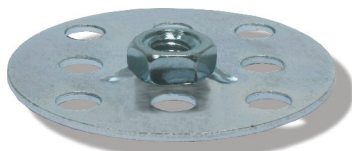
**Zinc plated Mild Steel
hexagonal nut on a blind
38mm diameter base plate**



part number	fastener size
MSF1B38M4	M4 Hex Nut
MSF1B38M5	M5 Hex Nut
MSF1B38M6	M6 Hex Nut

part number	fastener size
MSF1B38M8	M8 Hex Nut
MSF1B38M10	M10 Hex Nut
MSF1B38M12	M12 Hex Nut

**Zinc plated Mild Steel
hexagonal nut on a blind
50mm diameter base plate**

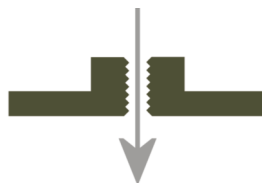


part number	fastener size
MSF1B50M5	M5 Hex Nut
MSF1B50M6	M6 Hex Nut
MSF1B50M8	M8 Hex Nut

part number	fastener size
MSF1B50M10	M10 Hex Nut
MSF1B50M12	M12 Hex Nut



Zinc plated Mild Steel female threaded insert on a sighted 19mm diameter base plate



EXAMPLE OF PART NUMBER

MS - mild steel

F2 - female threaded bush

S - sighted perforated base plate (with central thru-hole)

19 - 19mm base plate

M4 - 4mm internal thread diameter

5 - length of thread in mm

part number	fastener size
MSF2S19M45	M4x5
MSF2S19M410	M4x10
MSF2S19M412	M4x12
MSF2S19M414	M4x14
MSF2S19M416	M4x16
MSF2S19M422	M4x22
MSF2S19M55	M5x5
MSF2S19M510	M5x10
MSF2S19M512	M5x12

part number	fastener size
MSF2S19M514	M5x14
MSF2S19M516	M5x16
MSF2S19M522	M5x22
MSF2S19M65	M6x5
MSF2S19M610	M6x10
MSF2S19M612	M6x12
MSF2S19M614	M6x14
MSF2S19M616	M6x16
MSF2S19M622	M6x22

part number	fastener size
MSF2S19M85	M8x5
MSF2S19M810	M8x10
MSF2S19M812	M8x12
MSF2S19M814	M8x14
MSF2S19M816	M8x16
MSF2S19M822	M8x22

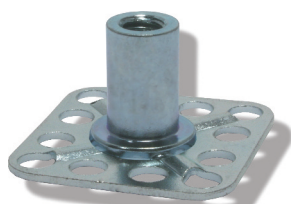


Zinc plated Mild Steel female threaded insert on a sighted 23mm diameter base plate

part number	fastener size
MSF2S23M45	M4x5
MSF2S23M410	M4x10
MSF2S23M412	M4x12
MSF2S23M414	M4x14
MSF2S23M416	M4x16
MSF2S23M422	M4x22
MSF2S23M55	M5x5
MSF2S23M510	M5x10
MSF2S23M512	M5x12
MSF2S23M514	M5x14
MSF2S23M516	M5x16

part number	fastener size
MSF2S23M522	M5x22
MSF2S23M65	M6x5
MSF2S23M610	M6x10
MSF2S23M612	M6x12
MSF2S23M614	M6x14
MSF2S23M616	M6x16
MSF2S23M622	M6x22
MSF2S23M85	M8x5
MSF2S23M810	M8x10
MSF2S23M812	M8x12
MSF2S23M814	M8x14

part number	fastener size
MSF2S23M816	M8x16
MSF2S23M822	M8x22
MSF2S23M105	M10x5
MSF2S23M1010	M10x10
MSF2S23M1012	M10x12
MSF2S23M1014	M10x14
MSF2S23M1016	M10x16
MSF2S23M1022	M10x22



Zinc plated Mild Steel female threaded insert on a sighted 30x30mm square base plate

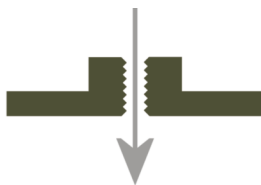
part number	fastener size
MSF2S3030M45	M4x5
MSF2S3030M410	M4x10
MSF2S3030M412	M4x12
MSF2S3030M414	M4x14
MSF2S3030M416	M4x16
MSF2S3030M422	M4x22
MSF2S3030M55	M5x5
MSF2S3030M510	M5x10
MSF2S3030M512	M5x12
MSF2S3030M514	M5x14
MSF2S3030M516	M5x16

part number	fastener size
MSF2S3030M522	M5x22
MSF2S3030M65	M6x5
MSF2S3030M610	M6x10
MSF2S3030M612	M6x12
MSF2S3030M614	M6x14
MSF2S3030M616	M6x16
MSF2S3030M622	M6x22
MSF2S3030M85	M8x5
MSF2S3030M810	M8x10
MSF2S3030M812	M8x12
MSF2S3030M814	M8x14

part number	fastener size
MSF2S3030M816	M8x16
MSF2S3030M822	M8x22
MSF2S3030M105	M10x5
MSF2S3030M1010	M10x10
MSF2S3030M1012	M10x12
MSF2S3030M1014	M10x14
MSF2S3030M1016	M10x16
MSF2S3030M1022	M10x22



Zinc plated Mild Steel female threaded insert on a sighted 38mm diameter base plate



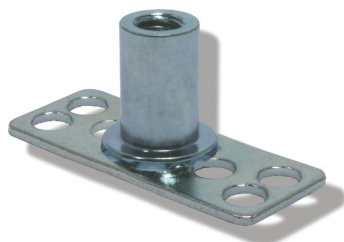
EXAMPLE OF PART NUMBER

MS - mild steel
F2 - female threaded bush
S - sighted perforated base plate (with central thru-hole)
38 - 38mm base plate
M4 - 4mm internal thread diameter
5 - length of thread in mm

part number	fastener size
MSF2S38M45	M4x5
MSF2S38M410	M4x10
MSF2S38M412	M4x12
MSF2S38M414	M4x14
MSF2S38M416	M4x16
MSF2S38M422	M4x22
MSF2S38M55	M5x5
MSF2S38M510	M5x10
MSF2S38M512	M5x12
MSF2S38M514	M5x14
MSF2S38M516	M5x16

part number	fastener size
MSF2S38M522	M5x22
MSF2S38M65	M6x5
MSF2S38M610	M6x10
MSF2S38M612	M6x12
MSF2S38M614	M6x14
MSF2S38M616	M6x16
MSF2S38M622	M6x22
MSF2S38M85	M8x5
MSF2S38M810	M8x10
MSF2S38M812	M8x12
MSF2S38M814	M8x14

part number	fastener size
MSF2S38M816	M8x16
MSF2S38M822	M8x22
MSF2S38M105	M10x5
MSF2S38M1010	M10x10
MSF2S38M1012	M10x12
MSF2S38M1014	M10x14
MSF2S38M1016	M10x16
MSF2S38M1022	M10x22

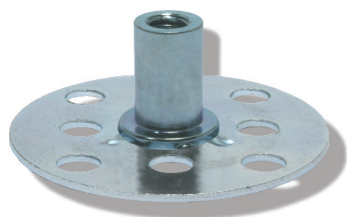


Zinc plated Mild Steel female threaded insert on a sighted 38x15mm rectangular base plate

part number	fastener size
MSF2S3815M45	M4x5
MSF2S3815M410	M4x10
MSF2S3815M412	M4x12
MSF2S3815M414	M4x14
MSF2S3815M416	M4x16
MSF2S3815M422	M4x22
MSF2S3815M55	M5x5
MSF2S3815M510	M5x10
MSF2S3815M512	M5x12
MSF2S3815M514	M5x14
MSF2S3815M516	M5x16

part number	fastener size
MSF2S3815M522	M5x22
MSF2S3815M65	M6x5
MSF2S3815M610	M6x10
MSF2S3815M612	M6x12
MSF2S3815M614	M6x14
MSF2S3815M616	M6x16
MSF2S3815M622	M6x22
MSF2S3815M85	M8x5
MSF2S3815M810	M8x10
MSF2S3815M812	M8x12
MSF2S3815M814	M8x14

part number	fastener size
MSF2S3815M816	M8x16
MSF2S3815M822	M8x22
MSF2S3815M105	M10x5
MSF2S3815M1010	M10x10
MSF2S3815M1012	M10x12
MSF2S3815M1014	M10x14
MSF2S3815M1016	M10x16
MSF2S3815M1022	M10x22



Zinc plated Mild Steel female threaded insert on a sighted 50mm diameter base plate

part number	fastener size
MSF2S50M610	M6x10
MSF2S50M615	M6x15
MSF2S50M620	M6x20

part number	fastener size
MSF2S50M810	M8x10
MSF2S50M815	M8x15
MSF2S50M820	M8x20

part number	fastener size
MSF2S50M1010	M10x10
MSF2S50M1015	M10x15
MSF2S50M1020	M10x20



Zinc plated Mild Steel female threaded insert on a blind 19mm diameter base plate



EXAMPLE OF PART NUMBER

MS - mild steel

F2 - female threaded bush

B - blind perforated base plate (no central thru-hole)

19 - 19mm base plate

M4 - 4mm internal thread diameter

5 - length of thread in mm

part number	fastener size
MSF2B19M45	M4x5
MSF2B19M410	M4x10
MSF2B19M412	M4x12
MSF2B19M414	M4x14
MSF2B19M416	M4x16
MSF2B19M422	M4x22
MSF2B19M55	M5x5
MSF2B19M510	M5x10

part number	fastener size
MSF2B19M512	M5x12
MSF2B19M514	M5x14
MSF2B19M516	M5x16
MSF2B19M522	M5x22
MSF2B19M65	M6x5
MSF2B19M610	M6x10
MSF2B19M612	M6x12
MSF2B19M614	M6x14

part number	fastener size
MSF2B19M616	M6x16
MSF2B19M622	M6x22
MSF2B19M85	M8x5
MSF2B19M810	M8x10
MSF2B19M812	M8x12
MSF2B19M814	M8x14
MSF2B19M816	M8x16
MSF2B19M822	M8x22



Zinc plated Mild Steel female threaded insert on a blind 23mm diameter base plate

part number	fastener size
MSF2B23M45	M4x5
MSF2B23M410	M4x10
MSF2B23M412	M4x12
MSF2B23M414	M4x14
MSF2B23M416	M4x16
MSF2B23M422	M4x22
MSF2B23M55	M5x5
MSF2B23M510	M5x10
MSF2B23M512	M5x12
MSF2B23M514	M5x14

part number	fastener size
MSF2B23M516	M5x16
MSF2B23M522	M5x22
MSF2B23M65	M6x5
MSF2B23M610	M6x10
MSF2B23M612	M6x12
MSF2B23M614	M6x14
MSF2B23M616	M6x16
MSF2B23M622	M6x22
MSF2B23M85	M8x5
MSF2B23M810	M8x10

part number	fastener size
MSF2B23M812	M8x12
MSF2B23M814	M8x14
MSF2B23M816	M8x16
MSF2B23M822	M8x22
MSF2B23M105	M10x5
MSF2B23M1010	M10x10
MSF2B23M1012	M10x12
MSF2B23M1014	M10x14
MSF2B23M1016	M10x16
MSF2B23M1022	M10x22



Zinc plated Mild Steel female threaded insert on a blind 30x30mm square base plate

part number	fastener size
MSF2B3030M45	M4x5
MSF2B3030M410	M4x10
MSF2B3030M412	M4x12
MSF2B3030M414	M4x14
MSF2B3030M416	M4x16
MSF2B3030M422	M4x22
MSF2B3030M55	M5x5
MSF2B3030M510	M5x10
MSF2B3030M512	M5x12
MSF2B3030M514	M5x14

part number	fastener size
MSF2B3030M516	M5x16
MSF2B3030M522	M5x22
MSF2B3030M65	M6x5
MSF2B3030M610	M6x10
MSF2B3030M612	M6x12
MSF2B3030M614	M6x14
MSF2B3030M616	M6x16
MSF2B3030M622	M6x22
MSF2B3030M85	M8x5
MSF2B3030M810	M8x10

part number	fastener size
MSF2B3030M812	M8x12
MSF2B3030M814	M8x14
MSF2B3030M816	M8x16
MSF2B3030M822	M8x22
MSF2B3030M105	M10x5
MSF2B3030M1010	M10x10
MSF2B3030M1012	M10x12
MSF2B3030M1014	M10x14
MSF2B3030M1016	M10x16
MSF2B3030M1022	M10x22



Zinc plated Mild Steel female threaded insert on a blind 38mm diameter base plate



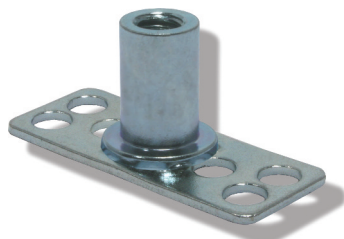
EXAMPLE OF PART NUMBER

MS - mild steel
F2 - female threaded bush
B - blind perforated base plate (no central thru-hole)
38 - 38X15mm base plate
M4 - 4mm internal thread diameter
5 - length of thread in mm

part number	fastener size
MSF2B38M45	M4x5
MSF2B38M410	M4x10
MSF2B38M412	M4x12
MSF2B38M414	M4x14
MSF2B38M416	M4x16
MSF2B38M422	M4x22
MSF2B38M55	M5x5
MSF2B38M510	M5x10
MSF2B38M512	M5x12
MSF2B38M514	M5x14

part number	fastener size
MSF2B38M516	M5x16
MSF2B38M522	M5x22
MSF2B38M65	M6x5
MSF2B38M610	M6x10
MSF2B38M612	M6x12
MSF2B38M614	M6x14
MSF2B38M616	M6x16
MSF2B38M622	M6x22
MSF2B38M85	M8x5
MSF2B38M810	M8x10

part number	fastener size
MSF2B38M812	M8x12
MSF2B38M814	M8x14
MSF2B38M816	M8x16
MSF2B38M822	M8x22
MSF2B38M105	M10x5
MSF2B38M1010	M10x10
MSF2B38M1012	M10x12
MSF2B38M1014	M10x14
MSF2B38M1016	M10x16
MSF2B38M1022	M10x22

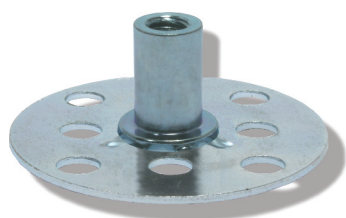


Zinc plated Mild Steel female threaded insert on a blind 38x15mm rectangular base plate

part number	fastener size
MSF2B3815M45	M4x5
MSF2B3815M410	M4x10
MSF2B3815M412	M4x12
MSF2B3815M414	M4x14
MSF2B3815M416	M4x16
MSF2B3815M422	M4x22
MSF2B3815M55	M5x5
MSF2B3815M510	M5x10
MSF2B3815M512	M5x12
MSF2B3815M514	M5x14

part number	fastener size
MSF2B3815M516	M5x16
MSF2B3815M522	M5x22
MSF2B3815M65	M6x5
MSF2B3815M610	M6x10
MSF2B3815M612	M6x12
MSF2B3815M614	M6x14
MSF2B3815M616	M6x16
MSF2B3815M622	M6x22
MSF2B3815M85	M8x5
MSF2B3815M810	M8x10

part number	fastener size
MSF2B3815M812	M8x12
MSF2B3815M814	M8x14
MSF2B3815M816	M8x16
MSF2B3815M822	M8x22
MSF2B3815M105	M10x5
MSF2B3815M1010	M10x10
MSF2B3815M1012	M10x12
MSF2B3815M1014	M10x14
MSF2B3815M1016	M10x16
MSF2B3815M1022	M10x22



Zinc plated Mild Steel female threaded insert on a blind 50mm diameter base plate

part number	fastener size
MSF2B50M610	M6x10
MSF2B50M615	M6x15
MSF2B50M620	M6x20

part number	fastener size
MSF2B50M810	M8x10
MSF2B50M815	M8x15
MSF2B50M820	M8x20

part number	fastener size
MSF2B50M1010	M10x10
MSF2B50M1015	M10x15
MSF2B50M1020	M10x20



316 Stainless Steel male threaded stud on a 15x15mm square base plate

part number	fastener size
SSM1B1515M412	M4x12
SSM1B1515M416	M4x16
SSM1B1515M420	M4x20
SSM1B1515M425	M4x25
SSM1B1515M430	M4x30
SSM1B1515M440	M4x40
SSM1B1515M450	M4x50
SSM1B1515M512	M5x12
SSM1B1515M516	M5x16

part number	fastener size
SSM1B1515M520	M5x20
SSM1B1515M525	M5x25
SSM1B1515M530	M5x30
SSM1B1515M540	M5x40
SSM1B1515M550	M5x50
SSM1B1515M560	M5x60
SSM1B1515M575	M5x75
SSM1B1515M612	M6x12
SSM1B1515M616	M6x16

EXAMPLE OF PART NUMBER

SS - stainless steel
M1 - male threaded stud
B - blind perforated base plate
1515 - 15x15mm base plate
M4 - metric thread diameter
12 - length of thread in mm

part number	fastener size
SSM1B1515M620	M6x20
SSM1B1515M625	M6x25
SSM1B1515M630	M6x30
SSM1B1515M640	M6x40
SSM1B1515M650	M6x50
SSM1B1515M660	M6x60
SSM1B1515M675	M6x75



316 Stainless Steel male threaded stud on a 19mm diameter base plate

part number	fastener size
SSM1B19M412	M4x12
SSM1B19M416	M4x16
SSM1B19M420	M4x20
SSM1B19M425	M4x25
SSM1B19M430	M4x30
SSM1B19M440	M4x40
SSM1B19M450	M4x50
SSM1B19M460	M4x60
SSM1B19M475	M4x75
SSM1B19M512	M5x12
SSM1B19M516	M5x16
SSM1B19M520	M5x20
SSM1B19M525	M5x25
SSM1B19M530	M5x30
SSM1B19M540	M5x40
SSM1B19M550	M5x50

part number	fastener size
SSM1B19M560	M5x60
SSM1B19M575	M5x75
SSM1B19M612	M6x12
SSM1B19M616	M6x16
SSM1B19M620	M6x20
SSM1B19M625	M6x25
SSM1B19M630	M6x30
SSM1B19M640	M6x40
SSM1B19M650	M6x50
SSM1B19M660	M6x60
SSM1B19M675	M6x75
SSM1B19M812	M8x12
SSM1B19M816	M8x16
SSM1B19M820	M8x20
SSM1B19M825	M8x25
SSM1B19M830	M8x30

EXAMPLE OF PART NUMBER

SS - stainless steel
M1 - male threaded stud
B - blind perforated base plate
19 - 19mm base plate
M4 - metric thread diameter
12 - length of thread in mm

part number	fastener size
SSM1B19M840	M8x40
SSM1B19M850	M8x50
SSM1B19M860	M8x60
SSM1B19M875	M8x75
SSM1B19M1012	M10x12
SSM1B19M1016	M10x16
SSM1B19M1020	M10x20
SSM1B19M1025	M10x25
SSM1B19M1030	M10x30
SSM1B19M1040	M10x40
SSM1B19M1050	M10x50
SSM1B19M1060	M10x60
SSM1B19M1075	M10x75



316 Stainless Steel male threaded stud on a 23mm diameter base plate

EXAMPLE OF PART NUMBER

SS - stainless steel
M1 - male threaded stud
B - blind perforated base plate
23 - 23mm base plate
M4 - metric thread diameter
12 - length of thread in mm

part number	fastener size
SSM1B23M412	M4x12
SSM1B23M416	M4x16
SSM1B23M420	M4x20
SSM1B23M425	M4x25
SSM1B23M430	M4x30
SSM1B23M440	M4x40
SSM1B23M450	M4x50
SSM1B23M460	M4x60
SSM1B23M475	M4x75
SSM1B23M512	M5x12
SSM1B23M516	M5x16
SSM1B23M520	M5x20
SSM1B23M525	M5x25
SSM1B23M530	M5x30
SSM1B23M540	M5x40

part number	fastener size
SSM1B23M550	M5x50
SSM1B23M560	M5x60
SSM1B23M575	M5x75
SSM1B23M612	M6x12
SSM1B23M616	M6x16
SSM1B23M620	M6x20
SSM1B23M625	M6x25
SSM1B23M630	M6x30
SSM1B23M640	M6x40
SSM1B23M650	M6x50
SSM1B23M660	M6x60
SSM1B23M675	M6x75
SSM1B23M812	M8x12
SSM1B23M816	M8x16
SSM1B23M820	M8x20

part number	fastener size
SSM1B23M825	M8x25
SSM1B23M830	M8x30
SSM1B23M840	M8x40
SSM1B23M850	M8x50
SSM1B23M860	M8x60
SSM1B23M875	M8x75
SSM1B23M1012	M10x12
SSM1B23M1016	M10x16
SSM1B23M1020	M10x20
SSM1B23M1025	M10x25
SSM1B23M1030	M10x30
SSM1B23M1040	M10x40
SSM1B23M1050	M10x50
SSM1B23M1060	M10x60
SSM1B23M1075	M10x75



316 Stainless Steel male threaded stud on a 30x30mm square base plate

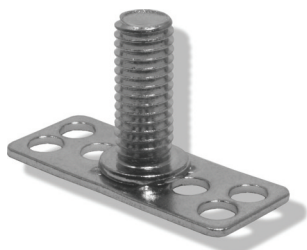
EXAMPLE OF PART NUMBER

SS - stainless steel
M1 - male threaded stud
B - blind perforated base plate
3030 - 30x30mm base plate
M4 - metric thread diameter
12 - length of thread in mm

part number	fastener size
SSM1B3030M412	M4x12
SSM1B3030M416	M4x16
SSM1B3030M420	M4x20
SSM1B3030M425	M4x25
SSM1B3030M430	M4x30
SSM1B3030M440	M4x40
SSM1B3030M450	M4x50
SSM1B3030M460	M4x60
SSM1B3030M475	M4x75
SSM1B3030M512	M5x12
SSM1B3030M516	M5x16
SSM1B3030M520	M5x20
SSM1B3030M525	M5x25
SSM1B3030M530	M5x30
SSM1B3030M540	M5x40

part number	fastener size
SSM1B3030M550	M5x50
SSM1B3030M560	M5x60
SSM1B3030M575	M5x75
SSM1B3030M612	M6x12
SSM1B3030M616	M6x16
SSM1B3030M620	M6x20
SSM1B3030M625	M6x25
SSM1B3030M630	M6x30
SSM1B3030M640	M6x40
SSM1B3030M650	M6x50
SSM1B3030M660	M6x60
SSM1B3030M675	M6x75
SSM1B3030M812	M8x12
SSM1B3030M816	M8x16
SSM1B3030M820	M8x20

part number	fastener size
SSM1B3030M825	M8x25
SSM1B3030M830	M8x30
SSM1B3030M840	M8x40
SSM1B3030M850	M8x50
SSM1B3030M860	M8x60
SSM1B3030M875	M8x75
SSM1B3030M1012	M10x12
SSM1B3030M1016	M10x16
SSM1B3030M1020	M10x20
SSM1B3030M1025	M10x25
SSM1B3030M1030	M10x30
SSM1B3030M1040	M10x40
SSM1B3030M1050	M10x50
SSM1B3030M1060	M10x60
SSM1B3030M1075	M10x75



316 Stainless Steel male threaded stud on a 38x15mm rectangular base plate

EXAMPLE OF PART NUMBER

SS - stainless steel
M1 - male threaded stud
B - blind perforated base plate
3815 - 38x15mm base plate
M4 - metric thread diameter
12 - length of thread in mm

part number	fastener size
SSM1B3815M412	M4x12
SSM1B3815M416	M4x16
SSM1B3815M420	M4x20
SSM1B3815M425	M4x25
SSM1B3815M430	M4x30
SSM1B3815M440	M4x40
SSM1B3815M450	M4x50
SSM1B3815M460	M4x60
SSM1B3815M475	M4x75
SSM1B3815M512	M5x12
SSM1B3815M516	M5x16
SSM1B3815M520	M5x20
SSM1B3815M525	M5x25
SSM1B3815M530	M5x30
SSM1B3815M540	M5x40

part number	fastener size
SSM1B3815M550	M5x50
SSM1B3815M560	M5x60
SSM1B3815M575	M5x75
SSM1B3815M612	M6x12
SSM1B3815M616	M6x16
SSM1B3815M620	M6x20
SSM1B3815M625	M6x25
SSM1B3815M630	M6x30
SSM1B3815M640	M6x40
SSM1B3815M650	M6x50
SSM1B3815M660	M6x60
SSM1B3815M675	M6x75
SSM1B3815M812	M8x12
SSM1B3815M816	M8x16
SSM1B3815M820	M8x20

part number	fastener size
SSM1B3815M825	M8x25
SSM1B3815M830	M8x30
SSM1B3815M840	M8x40
SSM1B3815M850	M8x50
SSM1B3815M860	M8x60
SSM1B3815M875	M8x75
SSM1B3815M1012	M10x12
SSM1B3815M1016	M10x16
SSM1B3815M1020	M10x20
SSM1B3815M1025	M10x25
SSM1B3815M1030	M10x30
SSM1B3815M1040	M10x40
SSM1B3815M1050	M10x50
SSM1B3815M1060	M10x60
SSM1B3815M1075	M10x75



316 Stainless Steel male threaded stud on a 38mm diameter base plate

EXAMPLE OF PART NUMBER

SS - stainless steel
M1 - male threaded stud
B - blind perforated base plate
38 - 38mm base plate
M4 - metric thread diameter
12 - length of thread in mm

part number	fastener size
SSM1B38M412	M4x12
SSM1B38M416	M4x16
SSM1B38M420	M4x20
SSM1B38M425	M4x25
SSM1B38M430	M4x30
SSM1B38M440	M4x40
SSM1B38M450	M4x50
SSM1B38M460	M4x60
SSM1B38M475	M4x75
SSM1B38M512	M5x12
SSM1B38M516	M5x16
SSM1B38M520	M5x20
SSM1B38M525	M5x25
SSM1B38M530	M5x30
SSM1B38M540	M5x40

part number	fastener size
SSM1B38M550	M5x50
SSM1B38M560	M5x60
SSM1B38M575	M5x75
SSM1B38M612	M6x12
SSM1B38M616	M6x16
SSM1B38M620	M6x20
SSM1B38M625	M6x25
SSM1B38M630	M6x30
SSM1B38M640	M6x40
SSM1B38M650	M6x50
SSM1B38M660	M6x60
SSM1B38M675	M6x75
SSM1B38M812	M8x12
SSM1B38M816	M8x16
SSM1B38M820	M8x20

part number	fastener size
SSM1B38M825	M8x25
SSM1B38M830	M8x30
SSM1B38M840	M8x40
SSM1B38M850	M8x50
SSM1B38M860	M8x60
SSM1B38M875	M8x75
SSM1B38M1012	M10x12
SSM1B38M1016	M10x16
SSM1B38M1020	M10x20
SSM1B38M1025	M10x25
SSM1B38M1030	M10x30
SSM1B38M1040	M10x40
SSM1B38M1050	M10x50
SSM1B38M1060	M10x60
SSM1B38M1075	M10x75



316 Stainless Steel male threaded stud on a 50mm diameter base plate

EXAMPLE OF PART NUMBER

SS - stainless steel
M1 - male threaded stud
B - blind perforated base plate
50 - 50mm base plate
M4 - metric thread diameter
12 - length of thread in mm

part number	fastener size
SSM1B50M615	M6x15
SSM1B50M620	M6x20
SSM1B50M625	M6x25
SSM1B50M630	M6x30
SSM1B50M640	M6x40
SSM1B50M650	M6x50
SSM1B50M660	M6x60
SSM1B50M675	M6x75

part number	fastener size
SSM1B50M815	M8x15
SSM1B50M820	M8x20
SSM1B50M825	M8x25
SSM1B50M830	M8x30
SSM1B50M840	M8x40
SSM1B50M850	M8x50
SSM1B50M860	M8x60
SSM1B50M875	M8x75

part number	fastener size
SSM1B50M1015	M10x15
SSM1B50M1020	M10x20
SSM1B50M1025	M10x25
SSM1B50M1030	M10x30
SSM1B50M1040	M10x40
SSM1B50M1050	M10x50
SSM1B50M1060	M10x60
SSM1B50M1075	M10x75



MTP

part number	fastener size
MTPM4X14	M4x14
MTPM5X25	M5x25
MTPM6x25	M6x25
MTPM6x50	M6x50
MTPM8X50	M8x50

"MTP Male thread protectors (closed end, easy fit)"

EXAMPLE OF PART NUMBER

MTP - male thread protector (tight fit) with closed end
M5 - for use with a male thread of this diameter
25 - for use with a male thread of this length



MTPT

part number	fastener size
MTPTM5x25	M5x25
MTPTM6x12	M6x12
MTPTM6x25	M6x25
MTPTM8X30	M8x30

"MTPT Male thread protectors (open end, easy fit)"

EXAMPLE OF PART NUMBER

MTP - male thread protector (easy fit) with closed end
M6 - for use with a male thread of this diameter
12 - for use with a male thread of this length



MTPO

part number	fastener size
MTPOM4x25	M4x25
MTPOM5x25	M5x25
MTPOM6X25	M6x25
MTPOM6X50	M6x50
MTPOM8x19	M8x19
MTPOM8X22	M8x22
MTPOM8x75	M8x75
MTPOM10x30	M10x30
MTPOM10x50	M10x50
MTPOM10x75	M10x75

"Male thread protectors (open end, easy fit)"

EXAMPLE OF PART NUMBER

MTP - male thread protector (easy fit) with open end
M4 - for use with a male thread of this diameter
25 - for use with a male thread of this length



**316 Stainless Steel male
pin on a 15x15mm
square base plate**

part number	fastener size
SSM4B151547512	4.75x12
SSM4B151547520	4.75x20
SSM4B151547525	4.75x25
SSM4B151547530	4.75x30
SSM4B151547540	4.75x40

part number	fastener size
SSM4B151547550	4.75x50
SSM4B151547560	4.75x60
SSM4B151547575	4.75x75



**316 Stainless Steel male
pin on a 19mm
diameter base plate**

part number	fastener size
SSM4B1947512	4.75x12
SSM4B1947520	4.75x20
SSM4B1947525	4.75x25
SSM4B1947530	4.75x30
SSM4B1947540	4.75x40

part number	fastener size
SSM4B1947550	4.75x50
SSM4B1947560	4.75x60
SSM4B1947575	4.75x75



**316 Stainless Steel male
pin on a 23mm
diameter base plate**

part number	fastener size
SSM4B2347512	4.75x12
SSM4B2347520	4.75x20
SSM4B2347525	4.75x25
SSM4B2347530	4.75x30
SSM4B2347540	4.75x40

part number	fastener size
SSM4B2347550	4.75x50
SSM4B2347560	4.75x60
SSM4B2347575	4.75x75



**316 Stainless Steel male
pin on a 30x30mm
square base plate**

part number	fastener size
SSM4B303047512	4.75x12
SSM4B303047520	4.75x20
SSM4B303047525	4.75x25
SSM4B303047530	4.75x30
SSM4B303047540	4.75x40

part number	fastener size
SSM4B303047550	4.75x50
SSM4B303047560	4.75x60
SSM4B303047575	4.75x75

EXAMPLE OF PART NUMBER

SS - stainless steel
M4 - male pin
B - blind perforated base plate
1515 - 15x15mm base plate
475 - 4.75mm pin diameter
12 - pin length in mm

EXAMPLE OF PART NUMBER

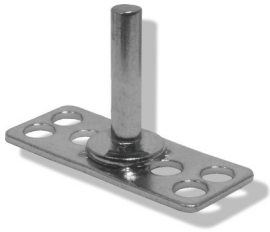
SS - stainless steel
M4 - male pin
B - blind perforated base plate
19 - 19mm base plate
475 - 4.75mm pin diameter
12 - pin length in mm

EXAMPLE OF PART NUMBER

SS - stainless steel
M4 - male pin
B - blind perforated base plate
23 - 23mm base plate
475 - 4.75mm pin diameter
12 - pin length in mm

EXAMPLE OF PART NUMBER

SS - stainless steel
M4 - male pin
B - blind perforated base plate
3030 - 30x30mm base plate
475 - 4.75mm pin diameter
12 - pin length in mm



**316 Stainless Steel male
pin on a 38x15mm
rectangular base plate**

EXAMPLE OF PART NUMBER

SS - stainless steel
M4 - male pin
B - blind perforated base plate
3815 - 38x15mm base plate
475 - 4.75mm pin diameter
12 - pin length in mm

part number	fastener size
SSM4B381547512	4.75x12
SSM4B381547520	4.75x20
SSM4B381547525	4.75x25
SSM4B381547530	4.75x30
SSM4B381547540	4.75x40

part number	fastener size
SSM4B381547550	4.75x50
SSM4B381547560	4.75x60
SSM4B381547575	4.75x75



**316 Stainless Steel male
pin on a 38mm
diameter base plate**

EXAMPLE OF PART NUMBER

SS - stainless steel
M4 - male pin
B - blind perforated base plate
38 - 38mm base plate
475 - 4.75mm pin diameter
12 - pin length in mm

part number	fastener size
SSM4B3847512	4.75x12
SSM4B3847520	4.75x20
SSM4B3847525	4.75x25
SSM4B3847530	4.75x30
SSM4B3847540	4.75x40

part number	fastener size
SSM4B3847550	4.75x50
SSM4B3847560	4.75x60
SSM4B3847575	4.75x75

Spring Clip

Encapsulated Spring Clip

All spring clips are to suit
a 4.75mm diameter pin

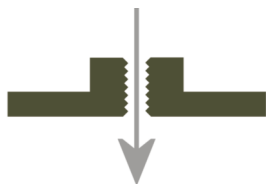


part number	description
S3	spring clip



part number	description
S3E	plastic encapsulated S3

Spring Clips (to suit a 4.75mm diameter pin)



**316 Stainless Steel
hexagonal nut on a sighted
19mm diameter base plate**



part number	fastener size
SSF1S19M3	M3 Hex Nut
SSF1S19M4	M4 Hex Nut
SSF1S19M5	M5 Hex Nut

EXAMPLE OF PART NUMBER

SS - stainless steel

F1 - hexagonal nut

S - sighted perforated base plate
(with central thru-hole)

19 - 19mm base plate

M3 - 3mm internal thread diameter

part number	fastener size
SSF1S19M6	M6 Hex Nut
SSF1S19M8	M8 Hex Nut

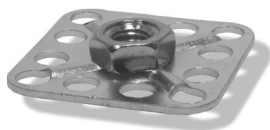
**316 Stainless Steel
hexagonal nut on a sighted
23mm diameter base plate**



part number	fastener size
SSF1S23M3	M3 Hex Nut
SSF1S23M4	M4 Hex Nut
SSF1S23M5	M5 Hex Nut

part number	fastener size
SSF1S23M6	M6 Hex Nut
SSF1S23M8	M8 Hex Nut
SSF1S23M10	M10 Hex Nut

**316 Stainless Steel
hexagonal nut on a sighted
30x30mm square base plate**



part number	fastener size
SSF1S3030M4	M4 Hex Nut
SSF1S3030M5	M5 Hex Nut
SSF1S3030M6	M6 Hex Nut

part number	fastener size
SSF1S3030M8	M8 Hex Nut
SSF1S3030M10	M10 Hex Nut
SSF1S3030M12	M12 Hex Nut

**316 Stainless Steel hexagonal
nut on a sighted 38x15mm
rectangular base plate**



part number	fastener size
SSF1S3815M3	M3 Hex Nut
SSF1S3815M4	M4 Hex Nut
SSF1S3815M5	M5 Hex Nut

part number	fastener size
SSF1S3815M6	M6 Hex Nut
SSF1S3815M8	M8 Hex Nut
SSF1S3815M10	M10 Hex Nut

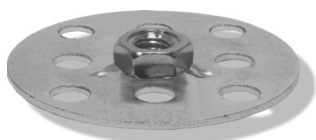
**316 Stainless Steel
hexagonal nut on a sighted
38mm diameter base plate**



part number	fastener size
SSF1S38M4	M4 Hex Nut
SSF1S38M5	M5 Hex Nut
SSF1S38M6	M6 Hex Nut

part number	fastener size
SSF1S38M8	M8 Hex Nut
SSF1S38M10	M10 Hex Nut
SSF1S38M12	M12 Hex Nut

**316 Stainless Steel
hexagonal nut on a sighted
50mm diameter base plate**



part number	fastener size
SSF1S50M5	M5 Hex Nut
SSF1S50M6	M6 Hex Nut
SSF1S50M8	M8 Hex Nut

part number	fastener size
SSF1S50M10	M10 Hex Nut
SSF1S50M12	M12 Hex Nut

**EXAMPLE OF PART NUMBER****SS** - stainless steel**F1** - hexagonal nut**B** - blind perforated base plate
(no central thru-hole)**19** - 19mm base plate**M3** - 3mm internal thread diameter**316 Stainless Steel
hexagonal nut on a blind
19mm diameter base plate**

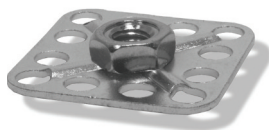
part number	fastener size
SSF1B19M3	M3 Hex Nut
SSF1B19M4	M4 Hex Nut
SSF1B19M5	M5 Hex Nut

part number	fastener size
SSF1B19M6	M6 Hex Nut
SSF1B19M8	M8 Hex Nut

**316 Stainless Steel
hexagonal nut on a blind
23mm diameter base plate**

part number	fastener size
SSF1B23M3	M3 Hex Nut
SSF1B23M4	M4 Hex Nut
SSF1B23M5	M5 Hex Nut

part number	fastener size
SSF1B23M6	M6 Hex Nut
SSF1B23M8	M8 Hex Nut
SSF1B23M10	M10 Hex Nut

**316 Stainless Steel
hexagonal nut on a blind
30x30mm square base plate**

part number	fastener size
SSF1B3030M4	M4 Hex Nut
SSF1B3030M5	M5 Hex Nut
SSF1B3030M6	M6 Hex Nut

part number	fastener size
SSF1B3030M8	M8 Hex Nut
SSF1B3030M10	M10 Hex Nut
SSF1B3030M12	M12 Hex Nut

**316 Stainless Steel hexagonal
nut on a blind 38x15mm
rectangular base plate**

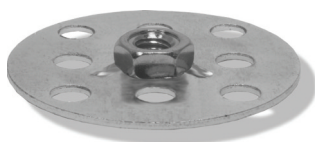
part number	fastener size
SSF1B3815M3	M3 Hex Nut
SSF1B3815M4	M4 Hex Nut
SSF1B3815M5	M5 Hex Nut

part number	fastener size
SSF1B3815M6	M6 Hex Nut
SSF1B3815M8	M8 Hex Nut
SSF1B3815M10	M10 Hex Nut

**316 Stainless Steel
hexagonal nut on a sighted
38mm diameter base plate**

part number	fastener size
SSF1B38M4	M4 Hex Nut
SSF1B38M5	M5 Hex Nut
SSF1B38M6	M6 Hex Nut

part number	fastener size
SSF1B38M8	M8 Hex Nut
SSF1B38M10	M10 Hex Nut
SSF1B38M12	M12 Hex Nut

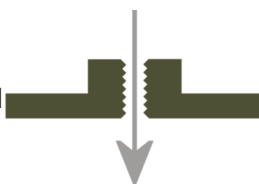
**316 Stainless Steel
hexagonal nut on a blind
50mm diameter base plate**

part number	fastener size
SSF1B50M5	M5 Hex Nut
SSF1B50M6	M6 Hex Nut
SSF1B50M8	M8 Hex Nut

part number	fastener size
SSF1B50M10	M10 Hex Nut
SSF1B50M12	M12 Hex Nut



316 Stainless Steel female threaded insert on a sighted 19mm diameter base plate



part number	fastener size
SSF2S19M45	M4x5
SSF2S19M46	M4x6
SSF2S19M410	M4x10
SSF2S19M415	M4x15
SSF2S19M420	M4x20
SSF2S19M55	M5x5
SSF2S19M56	M5x6

part number	fastener size
SSF2S19M510	M5x10
SSF2S19M515	M5x15
SSF2S19M520	M5x20
SSF2S19M65	M6x5
SSF2S19M66	M6x6
SSF2S19M610	M6x10
SSF2S19M615	M6x15

EXAMPLE OF PART NUMBER

SS - stainless steel

F2 - female threaded bush

S - sighted perforated base plate (with central thru-hole)

19 - 19mm base plate

M4 - 4mm internal thread diameter

5 - length of thread in mm

part number	fastener size
SSF2S19M620	M6x20
SSF2S19M85	M8x5
SSF2S19M86	M8x6
SSF2S19M810	M8x10
SSF2S19M815	M8x15
SSF2S19M820	M8x20



316 Stainless Steel female threaded insert on a sighted 23mm diameter base plate

part number	fastener size
SSF2S23M45	M4x5
SSF2S23M46	M4x6
SSF2S23M410	M4x10
SSF2S23M415	M4x15
SSF2S23M420	M4x20
SSF2S23M55	M5x5
SSF2S23M56	M5x6
SSF2S23M510	M5x10
SSF2S23M515	M5x15
SSF2S23M520	M5x20

part number	fastener size
SSF2S23M65	M6x5
SSF2S23M66	M6x6
SSF2S23M610	M6x10
SSF2S23M615	M6x15
SSF2S23M620	M6x20
SSF2S23M85	M8x5
SSF2S23M86	M8x6
SSF2S23M810	M8x10
SSF2S23M815	M8x15
SSF2S23M820	M8x20

part number	fastener size
SSF2S23M105	M10x5
SSF2S23M106	M10x6
SSF2S23M1010	M10x10
SSF2S23M1015	M10x15
SSF2S23M1020	M10x20

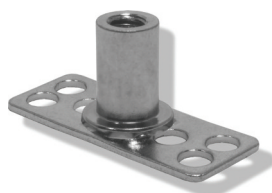


316 Stainless Steel female threaded insert on a sighted 30x30mm square base plate

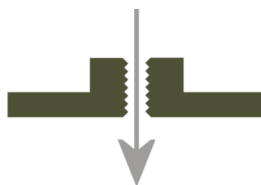
part number	fastener size
SSF2S3030M45	M4x5
SSF2S3030M46	M4x6
SSF2S3030M410	M4x10
SSF2S3030M415	M4x15
SSF2S3030M420	M4x20
SSF2S3030M55	M5x5
SSF2S3030M56	M5x6
SSF2S3030M510	M5x10
SSF2S3030M515	M5x15
SSF2S3030M520	M5x20

part number	fastener size
SSF2S3030M65	M6x5
SSF2S3030M66	M6x6
SSF2S3030M610	M6x10
SSF2S3030M615	M6x15
SSF2S3030M620	M6x20
SSF2S3030M85	M8x5
SSF2S3030M86	M8x6
SSF2S3030M810	M8x10
SSF2S3030M815	M8x15
SSF2S3030M820	M8x20

part number	fastener size
SSF2S3030M105	M10x5
SSF2S3030M106	M10x6
SSF2S3030M1010	M10x10
SSF2S3030M1015	M10x15
SSF2S3030M1020	M10x20



**316 Stainless Steel
female threaded insert
on a sighted 38x15mm
rectangular base plate**



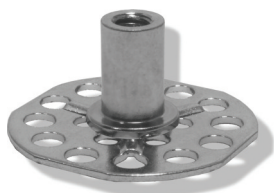
EXAMPLE OF PART NUMBER

SS - stainless steel
F2 - female threaded bush
S - sighted perforated base plate
 (with central thru-hole)
3815 - 38x15mm base plate
M4 - 4mm internal thread diameter
5 - length of thread in mm

part number	fastener size
SSF2S3815M45	M4x5
SSF2S3815M46	M4x6
SSF2S3815M410	M4x10
SSF2S3815M415	M4x15
SSF2S3815M420	M4x20
SSF2S3815M55	M5x5
SSF2S3815M56	M5x6
SSF2S3815M510	M5x10
SSF2S3815M515	M5x15
SSF2S3815M520	M5x20

part number	fastener size
SSF2S3815M65	M6x5
SSF2S3815M66	M6x6
SSF2S3815M610	M6x10
SSF2S3815M615	M6x15
SSF2S3815M620	M6x20
SSF2S3815M85	M8x5
SSF2S3815M86	M8x6
SSF2S3815M810	M8x10
SSF2S3815M815	M8x15
SSF2S3815M820	M8x20

part number	fastener size
SSF2S3815M105	M10x5
SSF2S3815M106	M10x6
SSF2S3815M1010	M10x10
SSF2S3815M1015	M10x15
SSF2S3815M1020	M10x20

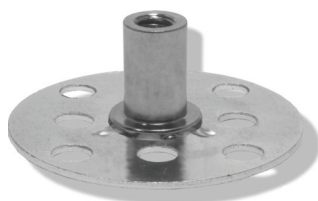


**316 Stainless Steel female
threaded insert on a sighted
38mm diameter base plate**

part number	fastener size
SSF2S38M45	M4x5
SSF2S38M46	M4x6
SSF2S38M410	M4x10
SSF2S38M415	M4x15
SSF2S38M420	M4x20
SSF2S38M55	M5x5
SSF2S38M56	M5x6
SSF2S38M510	M5x10
SSF2S38M515	M5x15
SSF2S38M520	M5x20

part number	fastener size
SSF2S38M65	M6x5
SSF2S38M66	M6x6
SSF2S38M610	M6x10
SSF2S38M615	M6x15
SSF2S38M620	M6x20
SSF2S38M85	M8x5
SSF2S38M86	M8x6
SSF2S38M810	M8x10
SSF2S38M815	M8x15
SSF2S38M820	M8x20

part number	fastener size
SSF2S38M105	M10x5
SSF2S38M106	M10x6
SSF2S38M1010	M10x10
SSF2S38M1015	M10x15
SSF2S38M1020	M10x20



**316 Stainless Steel female
threaded insert on a sighted
50mm diameter base plate**

part number	fastener size
SSF2S50M610	M6x10
SSF2S50M615	M6x15
SSF2S50M620	M6x20

part number	fastener size
SSF2S50M810	M8x10
SSF2S50M815	M8x15
SSF2S50M820	M8x20

part number	fastener size
SSF2S50M1010	M10x10
SSF2S50M1015	M10x15
SSF2S50M1020	M10x20



316 Stainless Steel female threaded insert on a blind 19mm diameter base plate



EXAMPLE OF PART NUMBER

SS - stainless steel

F2 - female threaded bush

B - blind perforated base plate (no central thru-hole)

19 - 19mm base plate

M4 - 4mm internal thread diameter

5 - length of thread in mm

part number	fastener size
SSF2B19M45	M4x5
SSF2B19M46	M4x6
SSF2B19M410	M4x10
SSF2B19M415	M4x15
SSF2B19M420	M4x20
SSF2B19M55	M5x5
SSF2B19M56	M5x6

part number	fastener size
SSF2B19M510	M5x10
SSF2B19M515	M5x15
SSF2B19M520	M5x20
SSF2B19M65	M6x5
SSF2B19M66	M6x6
SSF2B19M610	M6x10
SSF2B19M615	M6x15

part number	fastener size
SSF2B19M620	M6x20
SSF2B19M85	M8x5
SSF2B19M86	M8x6
SSF2B19M810	M8x10
SSF2B19M815	M8x15
SSF2B19M820	M8x20



316 Stainless Steel female threaded insert on a blind 23mm diameter base plate

part number	fastener size
SSF2B23M45	M4x5
SSF2B23M46	M4x6
SSF2B23M410	M4x10
SSF2B23M415	M4x15
SSF2B23M420	M4x20
SSF2B23M55	M5x5
SSF2B23M56	M5x6
SSF2B23M510	M5x10
SSF2B23M515	M5x15
SSF2B23M520	M5x20

part number	fastener size
SSF2B23M65	M6x5
SSF2B23M66	M6x6
SSF2B23M610	M6x10
SSF2B23M615	M6x15
SSF2B23M620	M6x20
SSF2B23M85	M8x5
SSF2B23M86	M8x6
SSF2B23M810	M8x10
SSF2B23M815	M8x15
SSF2B23M820	M8x20

part number	fastener size
SSF2B23M105	M10x5
SSF2B23M106	M10x6
SSF2B23M1010	M10x10
SSF2B23M1015	M10x15
SSF2B23M1020	M10x20

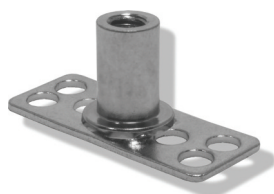


316 Stainless Steel female threaded insert on a blind 30x30mm square base plate

part number	fastener size
SSF2B3030M45	M4x5
SSF2B3030M46	M4x6
SSF2B3030M410	M4x10
SSF2B3030M415	M4x15
SSF2B3030M420	M4x20
SSF2B3030M55	M5x5
SSF2B3030M56	M5x6
SSF2B3030M510	M5x10
SSF2B3030M515	M5x15

part number	fastener size
SSF2B3030M520	M5x20
SSF2B3030M65	M6x5
SSF2B3030M66	M6x6
SSF2B3030M610	M6x10
SSF2B3030M615	M6x15
SSF2B3030M620	M6x20
SSF2B3030M85	M8x5
SSF2B3030M86	M8x6
SSF2B3030M810	M8x10

part number	fastener size
SSF2B3030M815	M8x15
SSF2B3030M820	M8x20
SSF2B3030M105	M10x5
SSF2B3030M106	M10x6
SSF2B3030M1010	M10x10
SSF2B3030M1015	M10x15
SSF2B3030M1020	M10x20



**316 Stainless Steel
female threaded insert
on a blind 38x15mm
rectangular base plate**



EXAMPLE OF PART NUMBER

SS - stainless steel

F2 - female threaded bush

B - blind perforated base plate
(no central thru-hole)

3815 - 38x15mm base plate

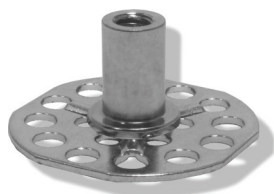
M4 - 4mm internal thread diameter

5 - length of thread in mm

part number	fastener size
SSF2B3815M45	M4x5
SSF2B3815M46	M4x6
SSF2B3815M410	M4x10
SSF2B3815M415	M4x15
SSF2B3815M420	M4x20
SSF2B3815M55	M5x5
SSF2B3815M56	M5x6
SSF2B3815M510	M5x10
SSF2B3815M515	M5x15
SSF2B3815M520	M5x20

part number	fastener size
SSF2B3815M65	M6x5
SSF2B3815M66	M6x6
SSF2B3815M610	M6x10
SSF2B3815M615	M6x15
SSF2B3815M620	M6x20
SSF2B3815M85	M8x5
SSF2B3815M86	M8x6
SSF2B3815M810	M8x10
SSF2B3815M815	M8x15
SSF2B3815M820	M8x20

part number	fastener size
SSF2B3815M105	M10x5
SSF2B3815M106	M10x6
SSF2B3815M1010	M10x10
SSF2B3815M1015	M10x15
SSF2B3815M1020	M10x20

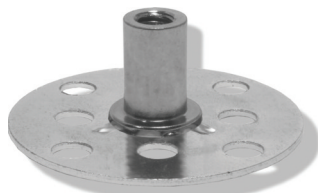


**316 Stainless Steel female
threaded insert on a blind
38mm diameter base plate**

part number	fastener size
SSF2B38M45	M4x5
SSF2B38M46	M4x6
SSF2B38M410	M4x10
SSF2B38M415	M4x15
SSF2B38M420	M4x20
SSF2B38M55	M5x5
SSF2B38M56	M5x6
SSF2B38M510	M5x10
SSF2B38M515	M5x15
SSF2B38M520	M5x20

part number	fastener size
SSF2B38M65	M6x5
SSF2B38M66	M6x6
SSF2B38M610	M6x10
SSF2B38M615	M6x15
SSF2B38M620	M6x20
SSF2B38M85	M8x5
SSF2B38M86	M8x6
SSF2B38M810	M8x10
SSF2B38M815	M8x15
SSF2B38M820	M8x20

part number	fastener size
SSF2B38M105	M10x5
SSF2B38M106	M10x6
SSF2B38M1010	M10x10
SSF2B38M1015	M10x15
SSF2B38M1020	M10x20



**316 Stainless Steel female
threaded insert on a blind
50mm diameter base plate**

part number	fastener size
SSF2B50M610	M6x10
SSF2B50M615	M6x15
SSF2B50M620	M6x20

part number	fastener size
SSF2B50M810	M8x10
SSF2B50M815	M8x15
SSF2B50M820	M8x20

part number	fastener size
SSF2B50M1010	M10x10
SSF2B50M1015	M10x15
SSF2B50M1020	M10x20

Adhesives

Our RA300 adhesive is a high strength, fast curing two-part structural adhesive system.

On application, the grade's high viscosity is ideal for use with our fasteners, as well as gap filling and vertical surface applications. This unique Methacrylate chemistry can offer excellent tensile and impact strength, even without priming the surfaces. In addition, the advanced macro structure provides the bonded assembly with excellent environmental and chemical resistance in the most demanding applications.

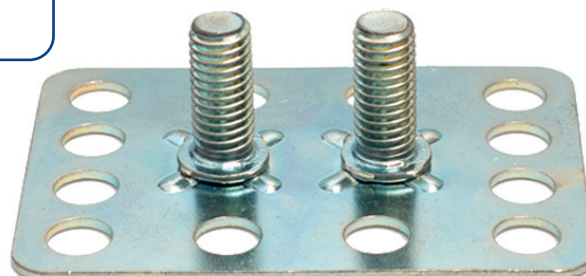
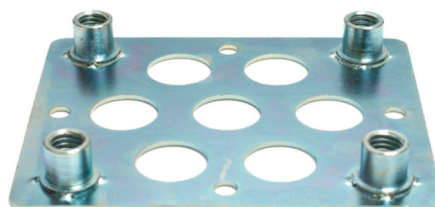


Features:

- High Viscosity - Non Slump Application
- High Impact Strength & Fatigue Endurance
- Fast Cure System (12-15 mins fixture time)
- Ideal for use with Veck bonding fasteners

Special Products

If you are unable to find a suitable fastener from within our standard range please contact us immediately for a quotation.



Please be aware that part availability can vary and is subject to change without notice. Customers are advised to contact us regarding our current stock levels and lead times.

The minimum order quantity is 100 pcs and parts are sold in multiples of 100 pcs. All prices quoted are in Pounds Sterling (£), priced per 100 and do not include carriage or VAT. Orders are accepted in line with our standard Terms & Conditions, which are available upon request or from our website.



VECK COMPOSITE FASTENERS LTD

8 Wyvern Buildings • Grove Trading Estate • Dorchester • Dorset DT1 1ST • United Kingdom
Tel. +44 (0)1305 257800
Email. info@veckfasteners.com - www.veckfasteners.com

