



PROPRIETARY ITEM - EXCEPT FOR USES EXPRESSLY GRANTED IN WRITING INFORMATION DISCLOSED HEREON IS CONFIDENTIAL AND ALL RIGHTS PATENT AND OTHERWISE ARE RESERVED BY SOUTHCO, INC.

# TL SLIDE LATCH ASSEMBLY

| DATE      | DRAWN | CHKD | SCALE | DRAWING NUMBER |
|-----------|-------|------|-------|----------------|
| 07OCT2005 | MJS   | RLR  | 2:1   | J-TL-05-100    |

| REV | DATE      | DRAWN/CHKD | DESCRIPTION     | PART NUMBER  | MATERIAL        | FINISH                         | HANDLE TYPE |
|-----|-----------|------------|-----------------|--------------|-----------------|--------------------------------|-------------|
| A   | 13DEC2005 | BS/MDY     | PRN: P2005-1768 | TL-05-100-07 | STEEL           | ZINC PLATE, TRIVALENT CHROMATE | UP          |
| B   | 01AUG2006 | RLR/MJS    | PRN: P2006-1044 | TL-05-100-52 | STAINLESS STEEL | PASSIVATE                      | UP          |
| C   | 07MAR2012 | CMS/JCK    | PRN: P2012-0317 | TL-05-110-07 | STEEL           | ZINC PLATE, TRIVALENT CHROMATE | DOWN        |
| D   | 10JAN2013 | CMS/MJS    | PRN: P2013-0052 | TL-05-110-52 | STAINLESS STEEL | PASSIVATE                      | DOWN        |

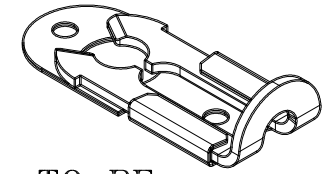
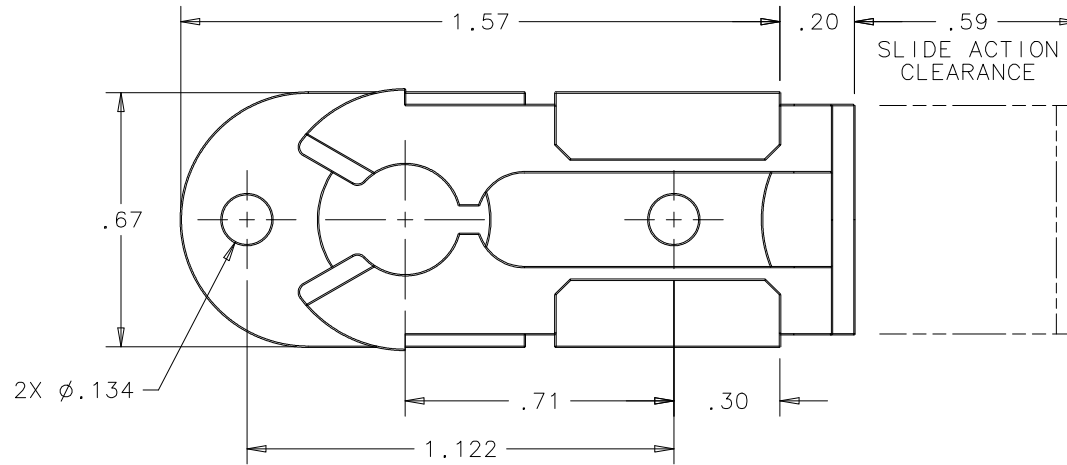
**INCHES**

ALL DIMENSIONS WITHOUT TOLERANCES ARE FOR REFERENCE ONLY.

THIRD ANGLE PROJECTION

A PAPER SIZE

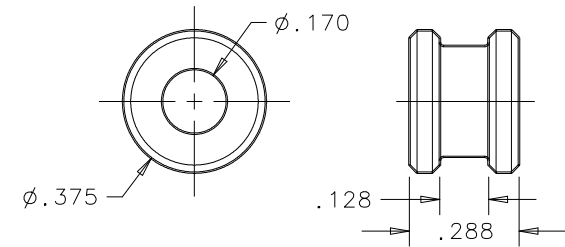
NOTE: RoHS COMPLIANT



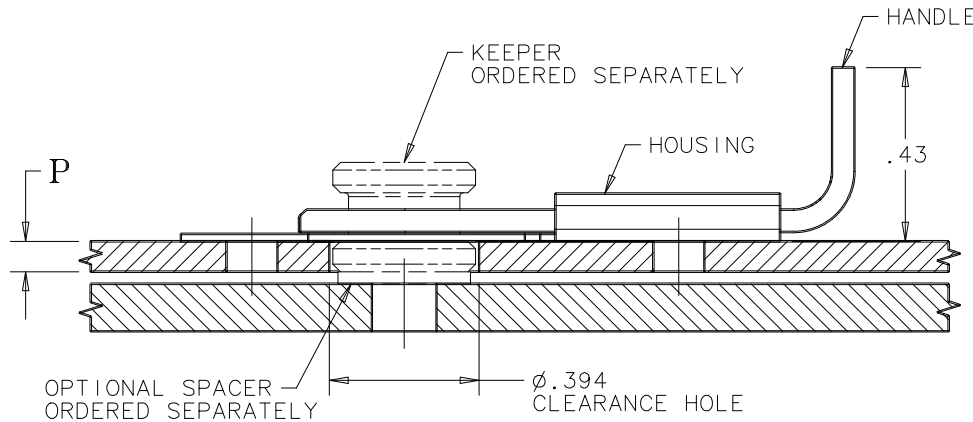
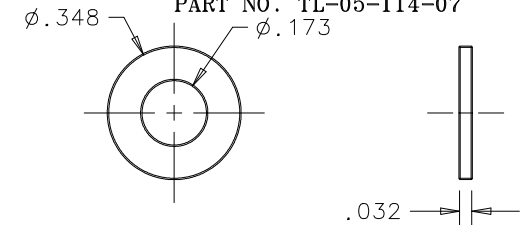
TO BE USED WITH



KEEPER  
(ORDERED SEPARATELY)  
PART NO. TL-05-117-07  
52



STEEL SPACER  
(ORDERED SEPARATELY)  
OPTIONAL  
PART NO. TL-05-114-07



| PANEL THICKNESS P | REQUIRED NO. OF SPACERS |
|-------------------|-------------------------|
| .046 - .080       | 0                       |
| .081 - .128       | 1                       |
| .129 - .160       | 2                       |