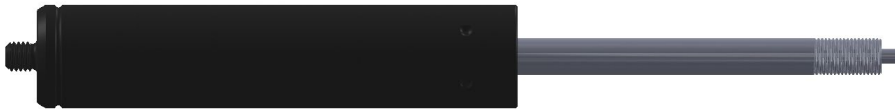
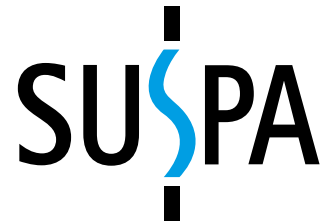


Lockline standard program

Lockable gas springs EL1, EL2, HY1 and HY3



Lockable gas springs from SUSPA guarantee an exact locking for any kind of flaps and kinematic systems and provide a convenient way of opening and closing. Due to the wide range of diverse release systems and connection elements, lockable gas springs support individual applications.

SUSPA GmbH

Industriestr. 12-14
90518 Altdorf
Germany

Phone +49 9187 930 355

Fax +49 9187 930 311

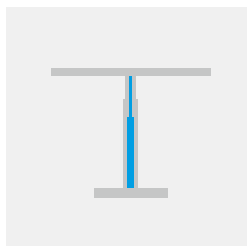
infoindustry@de.suspa.com

www.suspa.com

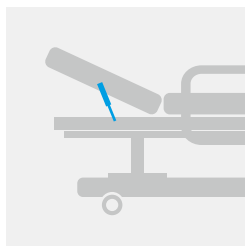
Advantages

- Balanced weight compensation by adjusting or locking your flap
- Wide range on elastic and rigid locking gas springs
- Rigid lockable gas springs can be mounted in any orientation

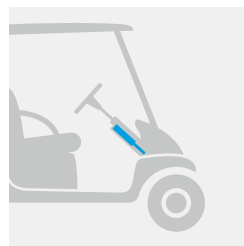
Applications



Side table



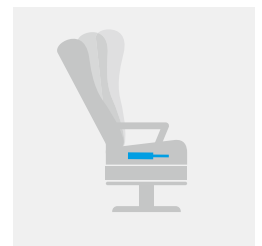
Medicine



Steering column



Relaxing chair



Passenger seat

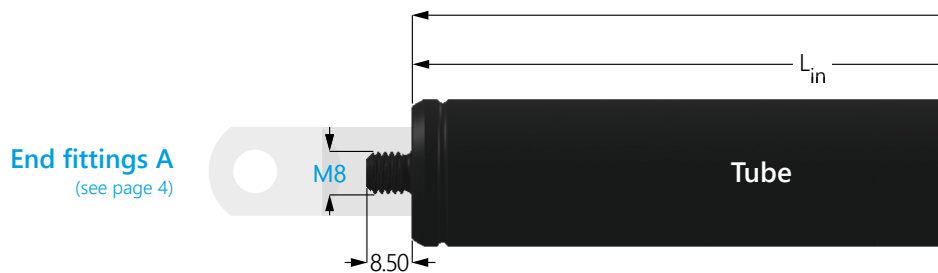
With more than 1,900 employees worldwide SUSPA manufactures gas springs, dampers, adjustment systems as well as crash and safety systems for many sectors; from furniture through to automobile industry.

www.suspa.com

Specification elastic locking

Type	Ø Tube (mm)	Ø Piston rod (mm)	Stroke (mm)	Extension force* F_1 (N)	Color tube	Color piston rod	Type of locking
EL1	22	10	20 - 250	200 - 800	black	Tenifer	elastic
EL2	28	10	20 - 250	200 - 1,000	black	Tenifer	elastic

* The extension force is selectable in steps of 50 Newton.



All figures in mm.

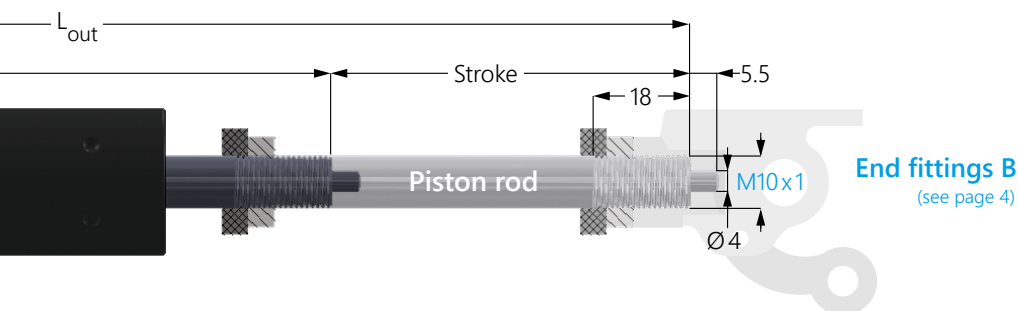
Technical Data

Length (mm)		Stroke (mm)	Ø Tube (mm)	Type	Order No.
Extended length L_{out}	Compressed length L_{in}				
110	90	20	22	EL1	02752293
			28	EL2	02752304
130	100	30	22	EL1	02752294
			28	EL2	02752305
150	110	40	22	EL1	02752295
			28	EL2	02752306
190	130	60	22	EL1	02752296
			28	EL2	02752307
230	150	80	22	EL1	02752297
			28	EL2	02752308
270	170	100	22	EL1	02752298
			28	EL2	02752309
310	190	120	22	EL1	02752299
			28	EL2	02752310
390	230	160	22	EL1	02752300
			28	EL2	02752311
470	270	200	22	EL1	02752301
			28	EL2	02752312
590	340	250	22	EL1	02752302
			28	EL2	02752313

Specification rigid locking

Type	Ø Tube (mm)	Ø Piston rod (mm)	Stroke (mm)	Extension force* F_i (N)	Color Tube	Color Piston rod	Type of locking
HY1	22	10	20 - 250	200 - 800	black	Tenifer	rigid
HY3	28	10	20 - 250	200 - 1,000	black	Tenifer	rigid

* The extension force is selectable in steps of 50 Newton.



Technical Data

Length (mm)		Stroke (mm)	Ø Tube (mm)	Type	Order No.
Extended length L_{out}	Compressed length L_{in}				
130	110	20	22	HY1	02852477
			28	HY3	02852488
160	130	30	22	HY1	02852478
			28	HY3	02852489
190	150	40	22	HY1	02852479
			28	HY3	02852490
230	170	60	22	HY1	02852480
			28	HY3	02852491
270	190	80	22	HY1	02852481
			28	HY3	02852492
330	230	100	22	HY1	02852482
			28	HY3	02852493
390	270	120	22	HY1	02852483
			28	HY3	02852494
470	310	160	22	HY1	02852484
			28	HY3	02852495
570	370	200	22	HY1	02852485
			28	HY3	02852496
710	460	250	22	HY1	02852486
			28	HY3	02852497



Ordering number

02852477

Extension force

300 N

F_i
(in Newton)

End fittings

06500155

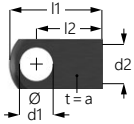
Tube
end fitting A

02150106

Piston rod
end fitting B

Please choose the end fittings on page 4.

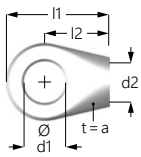
End fittings A



Steel joint eyelets

to meet the highest demands on stability and durability

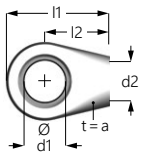
Order No.	a	l1	l2	d1	d2
06752017	10	19.5	13	8	M8
06700338	10	20.5	14	8	M8
06700344	10	22.5	16	8	M8
06750019	10	23.5	14	10	M8
06700343	12	21.5	14	10	M8
06700336	12	23.5	16	10	M8



Zinc joint eyelets

for applications subject to low loads

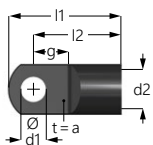
Order No.	a	l1	l2	d1	d2
06500155	12	25.5	16	8	M8
06500145	12	25.5	16	10	M8
06500029	12	25.5	16	12	M8



Zinc joint eyelets with a plastic bushing

for smooth function and installation that is free of clearance

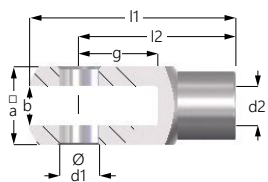
Order No.	a	l1	l2	d1	d2
16560002	12	25.5	16	8	M8
16560003	12	25.5	16	10	M8



Steel joint eyelets

for particularly thin fork receptors

Order No.	a	l1	l2	d1	d2	g
06750017	5	38	28	10	M8	10.5
06700348	5	36	28	8	M8	10.5



Steel fork heads

for ease of assembly and to meet the highest demands on stability and durability

Order No.	a	b	l1	l2	d1	d2	g
06800124	16	8	42	32	8	M8	16
06800132	20	10	52	40	10	M8	20

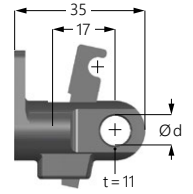
All figures in mm.

End fittings B

SusflexRegular

axial release: cable mounted parallel to gas spring

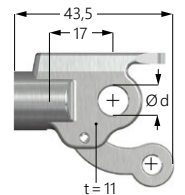
Force ratio	Eyelet d = 8 mm	Eyelet d = 10 mm
1:2	02150106	02150107



SusflexSide

90° release: cable mounted perpendicular to gas spring

Force ratio	Eyelet d = 8 mm	Eyelet d = 10 mm
1:2	02152022	02152021



SusflexDirect

for lever release

Type lever	Eyelet d = 8 mm	Eyelet d = 10 mm
1 Standard	02100075	02150102

