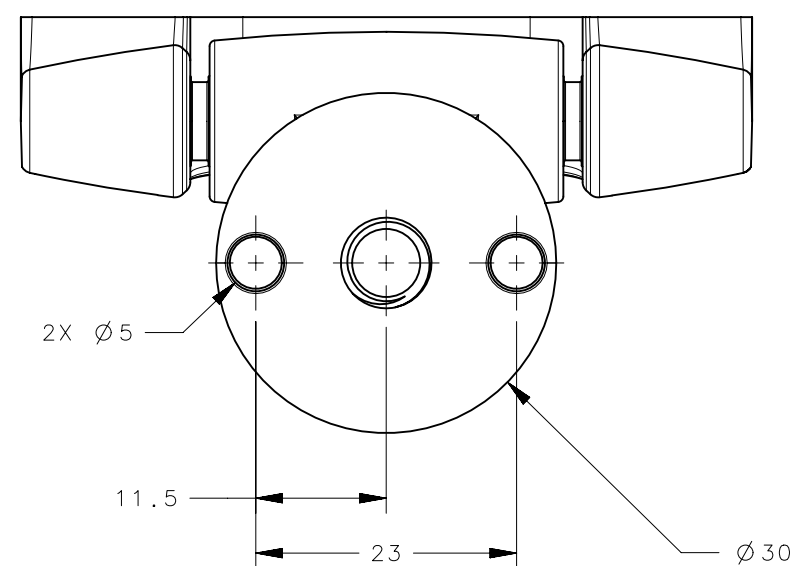
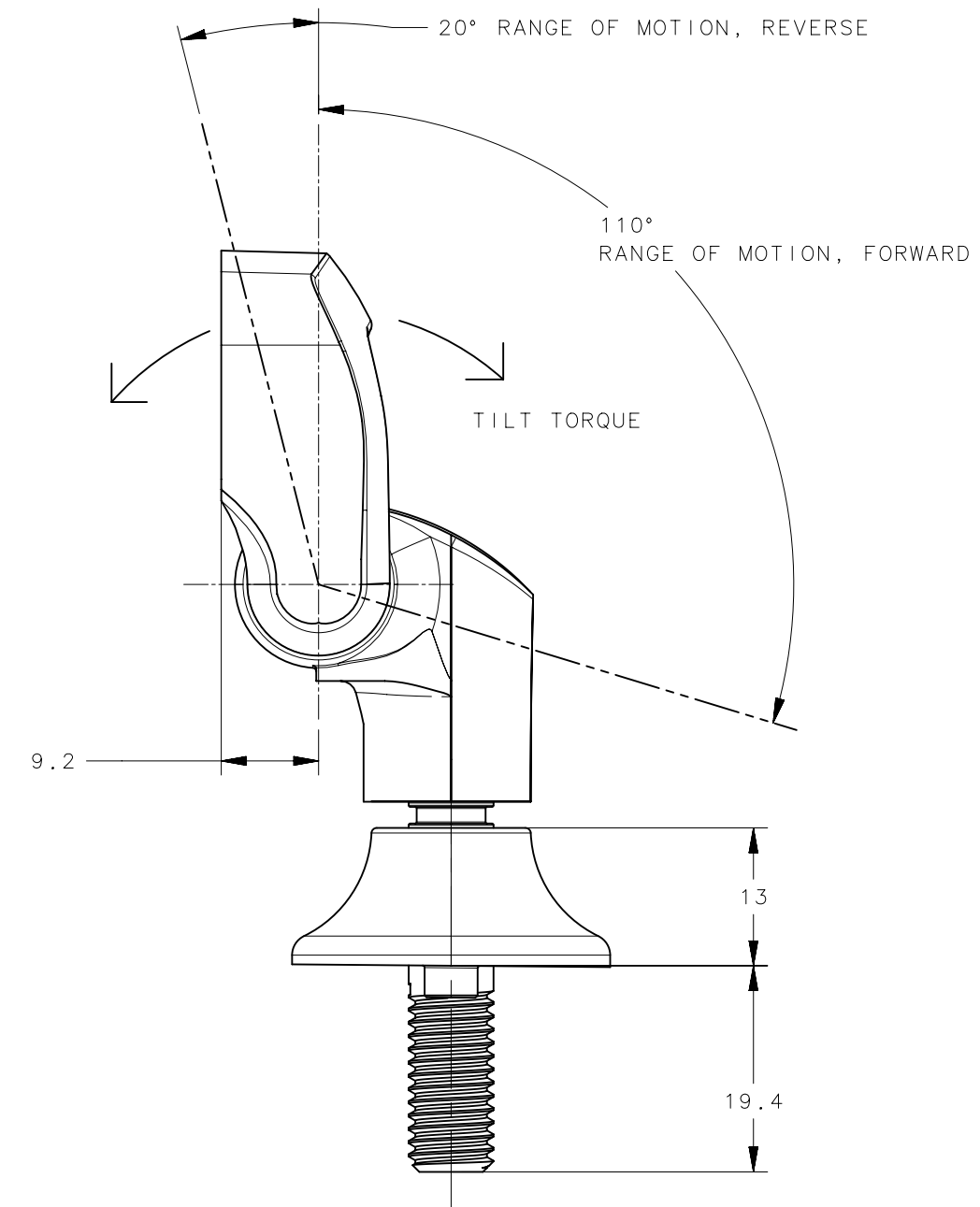
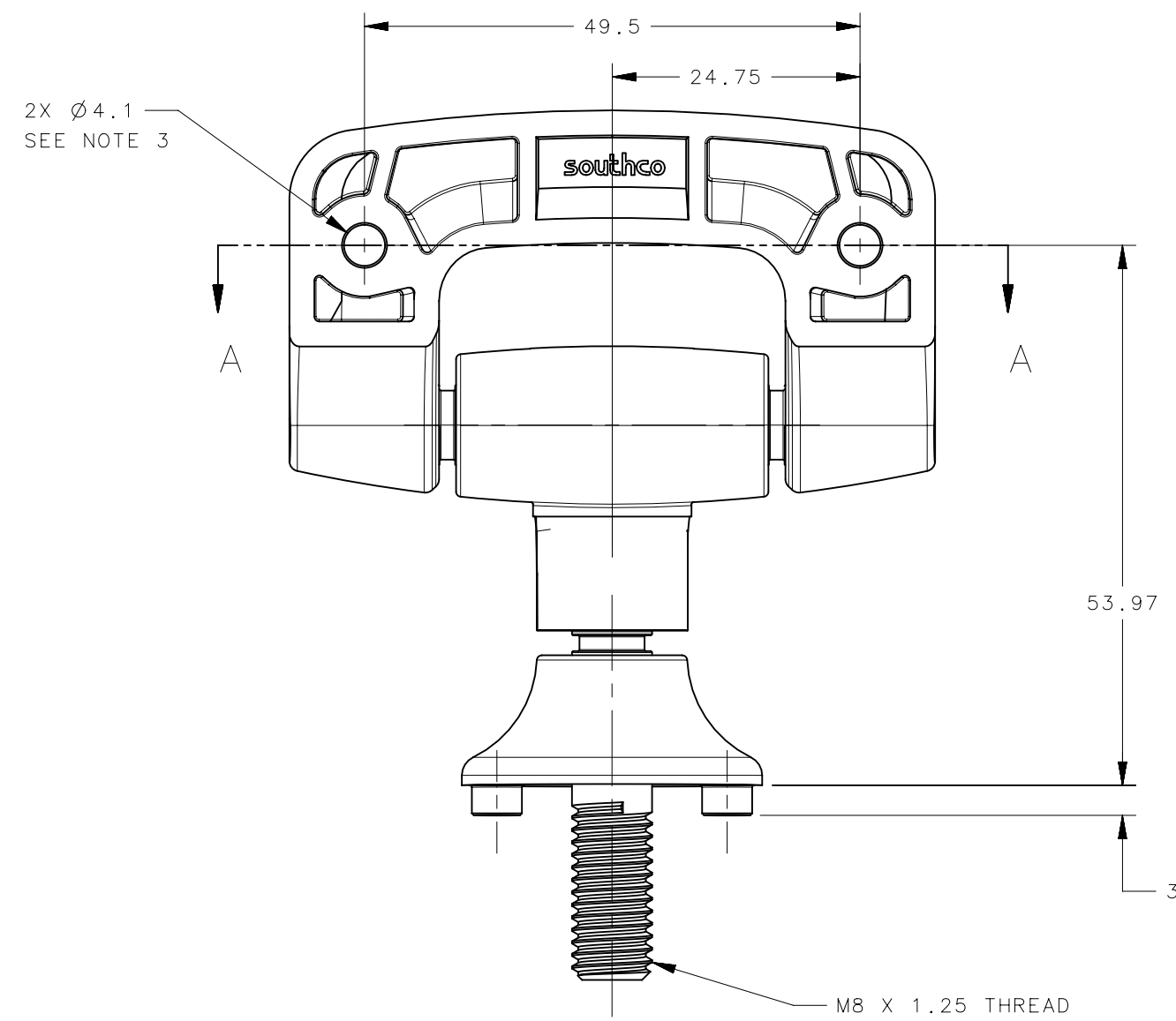
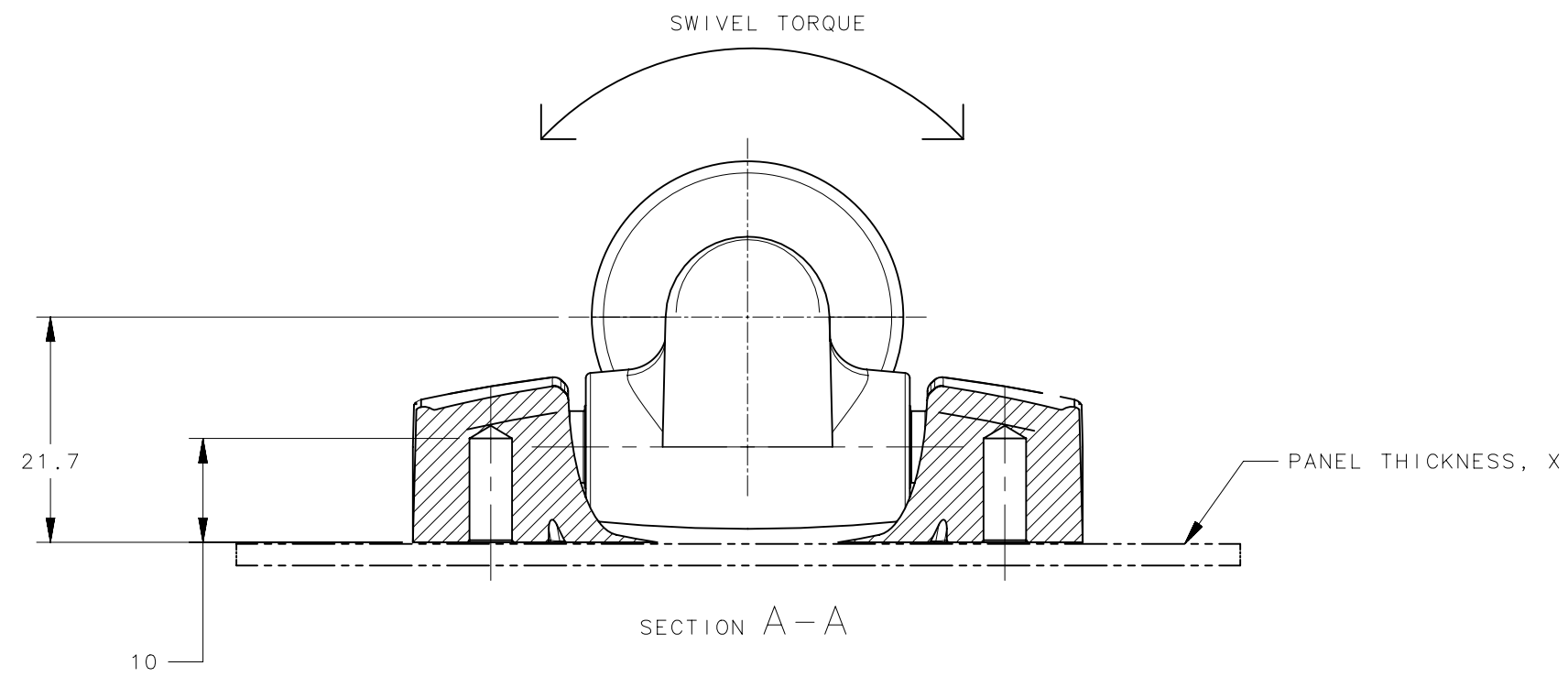


REVISION HISTORY			
REV	DATE	BY	DESCRIPTION
B	06JAN2014	JJT/MJS	PRN: P2014-0025



NOTES:

1. SWIVEL TORQUE = 2.26 N-m (20.0 in-lbf) +/- 20%
TILT TORQUE = 3.62 N-m (32.0 in-lbf) +/- 20%

2. SHOWN IN SHIPPING POSITION

3. CUSTOMER TO MOUNT USING:
- SELF-TAPPING SCREWS (SEE CHART FOR SOUTHCO P/N, PURCHASED SEPARATELY)
- M8 NUT (NOT PROVIDED, SOUTHCO P/N E3-0-23971-07 OR EQUIVALENT)
- LOCK WASHER (NOT PROVIDED, SOUTHCO P/N E3-0-2345-50 OR EQUIVALENT)

4. MATERIALS USED: GLASS-FILLED NYLON (COLOR BLACK), STAINLESS STEEL

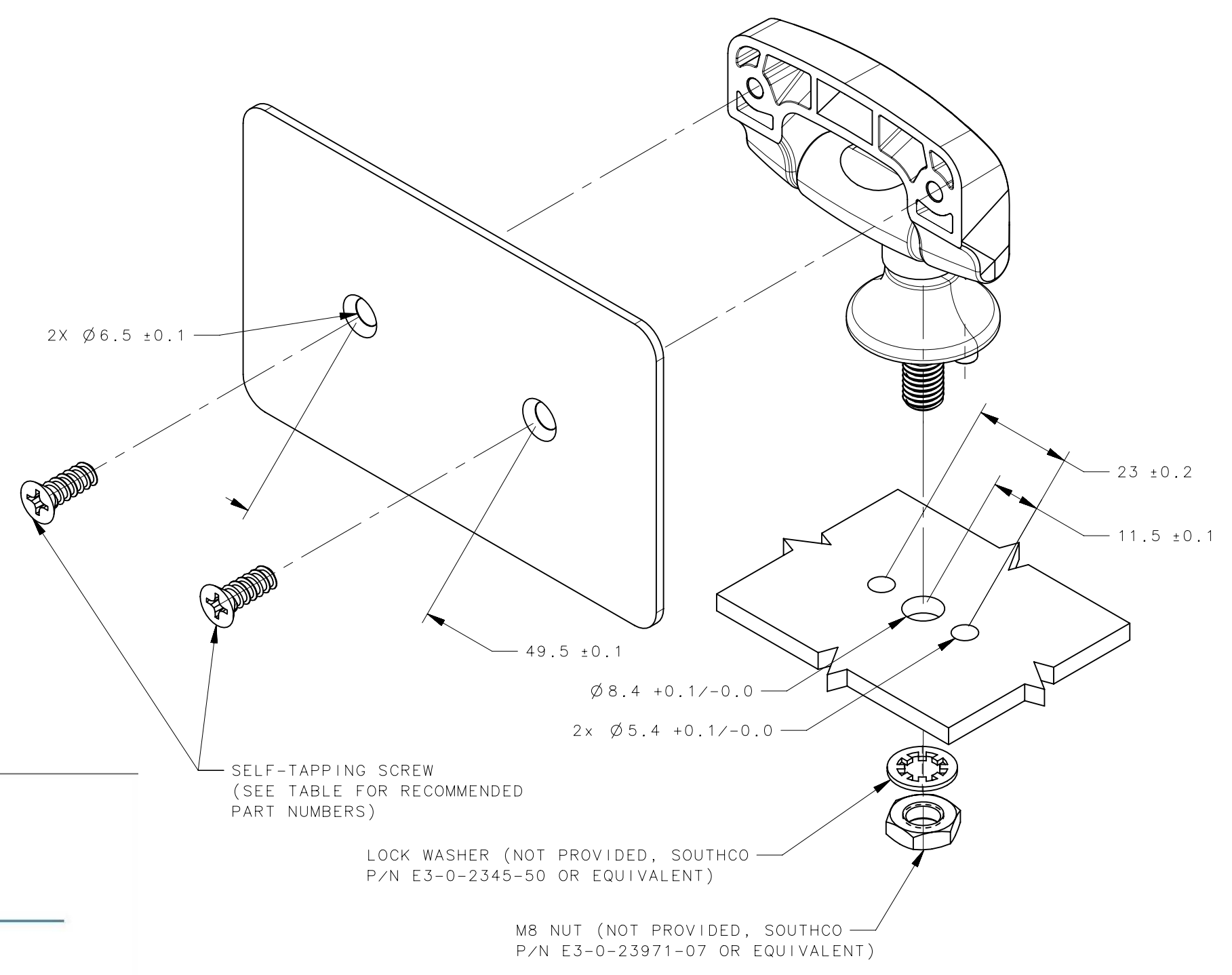
5. MAX TIGHTENING TORQUE OF SCREWS IS 2.3N-m (20.0 in-lbf)

PANEL THICKNESS, X (mm)	RECOMMENDED PAN-HEAD SCREW (SOUTHCO P/N)	RECOMMENDED FLAT-HEAD SCREW (SOUTHCO P/N)
1-4	96-79-1	96-79-11
4-7	96-79-2	96-79-12

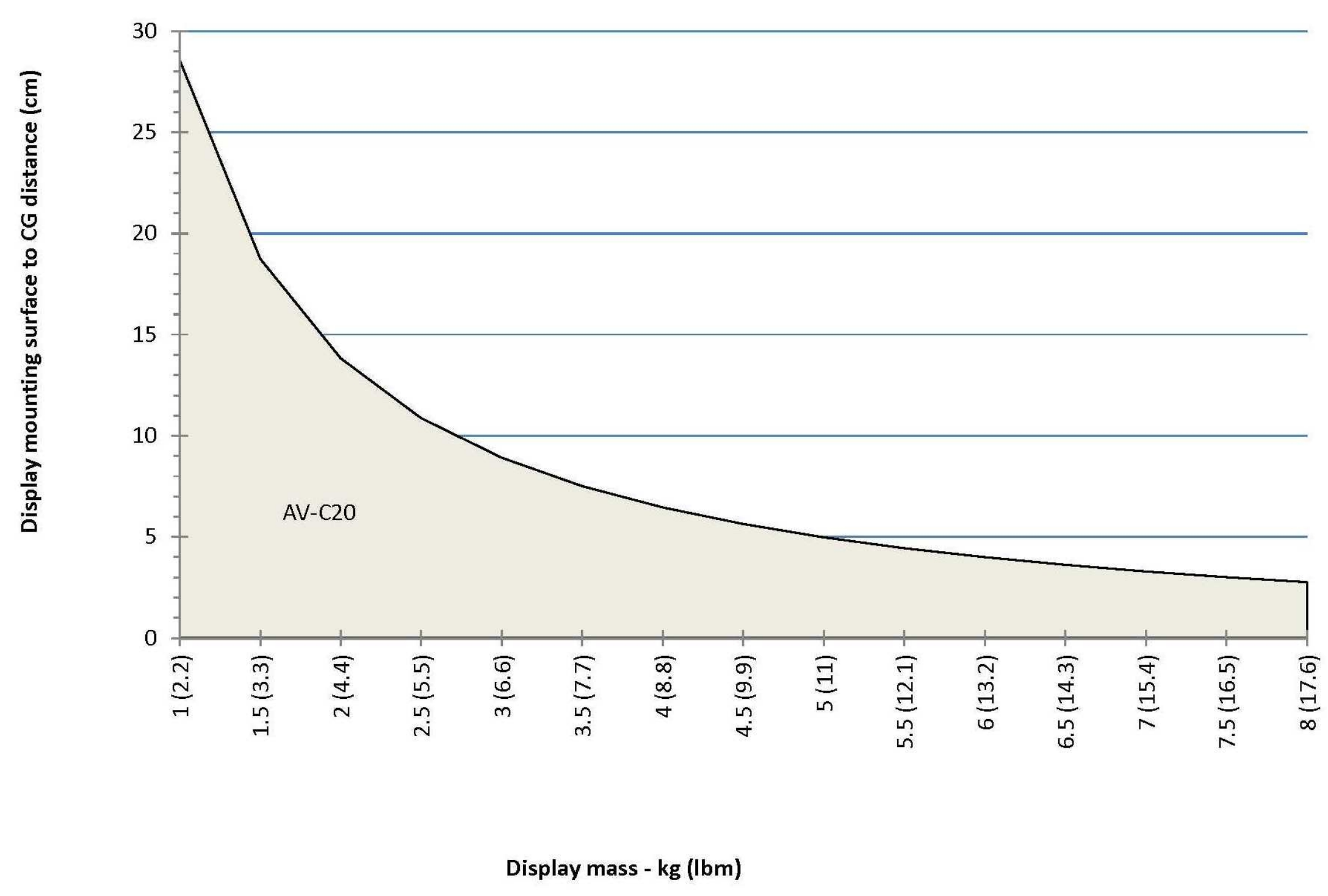
THIRD ANGLE PROJECTION		southco CONNECT · CREATE · INNOVATE
MILLIMETERS [IN]		
<small>TOLERANCES UNLESS OTHERWISE NOTED</small>		STANDARD TILT AND SWIVEL OVERMOLD HINGE
<small>SURFACE AREA XXXXXmm²</small> <small>VOLUME XXXXXmm³</small>	<small>ALL DIMENSIONS WITHOUT TOLERANCES ARE FOR REFERENCE ONLY.</small>	
<small>PROPRIETARY ITEM EXCEPT FOR USES EXPRESSLY GRANTED IN WRITING. INFORMATION DISCLOSED HEREON IS CONFIDENTIAL AND ALL RIGHTS, PATENT AND OTHERWISE, ARE RESERVED BY SOUTHCO, INC.</small>		<small>DESCRIPTION</small> J-AV-C20-K101
<small>PER ASME Y14.5M-1994</small>		<small>SCALE</small> 1:1
<small>DRAWN BY</small> JJT		<small>DATE</small> 23JAN2013
<small>SHEET</small> 1 OF 2		<small>SHEET</small> 1 OF 2

AV-C20-K101-20	ASSEMBLY
PART NUMBER	TYPE OF COMPONENT

REVISION HISTORY			
REV	DATE	BY	DESCRIPTION
B	06JAN2014	JJT/MJS	PRN: P2014-0025



AV-C20 Series - Capacity vs. Cg Distance



THIRD ANGLE PROJECTION		 CONNECT • CREATE • INNOVATE	
MILLIMETERS [IN]			
SURFACE AREA XXXXXmm ²		DESCRIPTION Hinge & Controlled Motion Device	
VOLUME XXXXXmm ³		ALL DIMENSIONS WITHOUT TOLERANCES ARE FOR REFERENCE ONLY.	
PROPRIETARY ITEM		SIZE C	SYSTEM NX
EXCEPT FOR USES EXPRESSLY GRANTED IN WRITING, INFORMATION DISCLOSED HEREON IS CONFIDENTIAL AND ALL RIGHTS, PATENT AND OTHERWISE, ARE RESERVED BY SOUTHCO, INC.		DWG NO. J-AV-C20-K101	SCALE 1:1
PER ASME Y14.5M-1994		DRAWN BY JJT	SHEET 2 OF 2